

THE CHAPIN SCHOOL

100 EAST END AVE. NEW YORK, NY 10028

SECOND FLOOR LIGHTING PLAN (PHASE - TWO)

SEAL & SIGNATURE

DATE: 06-01-15

PROJECT No: 1080200

DRAWN BY: RST

CHECK BY: AM

DWG No: E-402.00

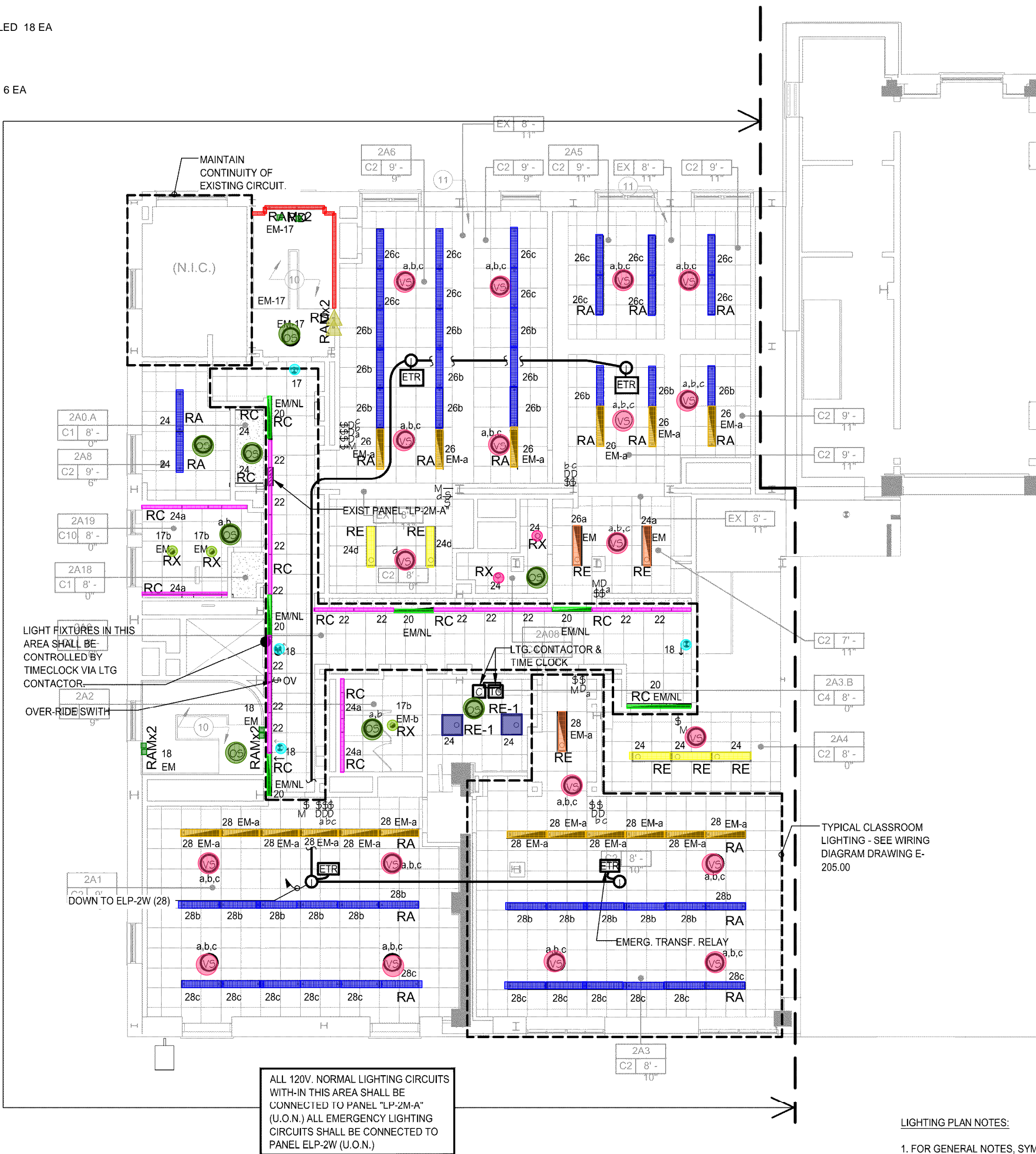
CADD FILE No:

TO THE BEST OF MY KNOWLEDGE, BELIEF AND PROFESSIONAL JUDGMENT, THESE PLANS AND SPECIFICATIONS ARE IN COMPLIANCE WITH THE NEW YORK CITY ENERGY CONSERVATION CODE

THIS PLAN IS APPROVED ONLY FOR WORK INDICATED ON THE APPLICATION SPECIFICATION SHEET. ALL OTHER MATTERS SHOWN ARE NOT TO BE RELIED UPON, OR TO BE CONSIDERED AS EITHER BEING APPROVED OR IN ACCORDANCE WITH APPLICABLE CODES.

BOOK SPECIFICATION IS PART OF THIS CONTRACT

- RC_Cove mounted perimeter LED wallgrazer 81 LF
RD_Surface mounted Wrap Lens LED Channel 18 LF
RE_Ceiling recessed 1'x4' lensed LED 5 EA
RE-1_Ceiling recessed 2'x2' lensed LED 2 EA
RX_Ceiling recessed LED downlight 2 EA
RAM_Surface mounted 4' T5 linear fluorescent striplight 2 EA
Exit Light_Ceiling Mounted 4 EA
OS 8 EA
VS 19 EA
RX_EM_Ceiling recessed LED downlight 3 EA
RA_EM_Pendant Mounted direct/indirect dimmable 4' linear LED 18 EA
RE_EM_Ceiling recessed 1'x4' lensed LED 3 EA
RC_EM/NL_Cove mounted perimeter LED wallgrazer 26 LF
RAM_EM_Surface mounted 4' T5 linear fluorescent striplight 6 EA



LIGHTING PLAN NOTES:

1. FOR GENERAL NOTES, SYMBOLS AND ABBREVIATION SEE DRAWING E-002.00
2. FOR LIGHTING NOTES SEE DRAWING E-003.00
3. FOR FIXTURE SCHEDULE, SEE DRAWING E-004.00
4. FOR PANEL SCHEDULES SEE E-100.00 SERIES DRAWINGS.
5. FOR LIGHTING CONTROL DIAGRAM SEE E-200.00 SERIES DRAWINGS.
6. REFER TO DEMOLITION NOTES DM-300.00 SERIES DRAWINGS FOR RELOCATIONS & REMOVAL DUE TO SHEAR WALL WORK.

SPECIAL LIGHTING PLAN NOTES:

1. ALL FIXTURES "R5" THRU "R21" ARE EXISTING TO REMAIN, EXCEPT WHERE REMOVED FOR STRUCTURAL WORK, WHICH THEN SHALL BE RE-INSTALLED AND RE-CONNECTED TO EXISTING CIRCUITS AND CONTROLS. ELECTRICAL CONTRACTOR SHALL MAINTAIN CONTINUITY OF EXISTING CIRCUITS.
2. ALL FIXTURES TYPES "R" (RX) WITH AN ADJACENT LETTER ARE NEW AND SHALL BE CONNECTED TO NEW CIRCUITING AND CONTROLS AS INDICATED.
3. ELECTRICAL CONTRACTOR SHALL INCLUDE THE PROTECTING, STORAGE, CLEANING AND RELAMPING OF FIXTURES IN THEIR BID.
4. REFER TO SECTION 012300 (ALTERNATES) OF ARCHITECT SPECIFICATION FOR SCHEDULE OF LIGHTING ALTERNATES A, B, C, & D

Takeoff By : AB
Checked By : Nick
Date 02-05-2016

©2015 Robert Director Associates. All rights reserved.
This drawing and the designs contained herein are issued to provide technical information to the project team. This information is intended for use on this project only.
Reproduction of this drawing in any form or use of the images or information contained herein without the expressed written permission of Robert Director Associates is strictly prohibited.



THE WOOLWORTH BUILDING
233 BROADWAY SUITE 2150, NEW YORK, NY 10279
t. 212.982.7900 f. 212.982.8111
95 WASHINGTON STREET, MORRISTOWN, NJ 07960
t. 973.539.5353 f. 973.539.0916
www.nkarchitects.com

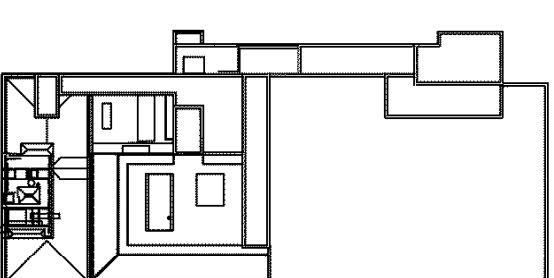
ALLEN R. KOPELSON, AIA 012618-1
BEN P. LEE, AIA 015723-1
STEPHEN P. ALUOTTO, AIA 031972-1
PAUL J. DRAGO, AIA 022980-1
DANIEL J. TOPPING, AIA 035092-1
MARK C. von BRADSKY, PE 77543-1

THIS DOCUMENT IS THE EXCLUSIVE PROPERTY OF NADASKAY KOPELSON ARCHITECTS. THE DOCUMENT AND THE INFORMATION IT CONTAINS MAY NOT BE REPRODUCED OR USED FOR OTHER THAN THE SPECIFIC PROJECT FOR WHICH IT WAS PREPARED WITHOUT THE EXPLICIT CONSENT OF NADASKAY KOPELSON ARCHITECTS.

rda Robert Director Associates
Consulting Engineers
RDT • Telecommunications RDMC • Mission Critical
19 West 44th Street New York, NY 10036 212.764.7272
proj. mgr. A. MANDATO proj. mgr. R. BROBSON

100% CD SUBMISSION
ISSUED FOR
CONSTRUCTION
PHASE 2
11/23/15

2	ADDENDUM #10	11/23/15
1	100% CD SUBMISSION	06/01/15
NO.	DESCRIPTION	DATE



NORTH
EAST 84TH STREET
BLOCK 23
LOT 23
ZONING R24
ZONING R24

PROJECT:



THE CHAPIN
SCHOOL

100 EAST END AVE. NEW YORK,
NY 10028

DRAWING TITLE
SECOND FLOOR- MEZZ
LIGHTING PLAN
(PHASE-TWO)

SEAL & SIGNATURE

DATE: 06-01-15

TO THE BEST OF MY KNOWLEDGE, BELIEF AND PROFESSIONAL JUDGMENT, THESE PLANS AND SPECIFICATIONS ARE IN COMPLIANCE WITH THE NEW YORK CITY ENERGY CONSERVATION CODE

"THIS PLAN IS APPROVED ONLY FOR WORK INDICATED ON THE APPLICATION SPECIFICATION SHEET. ALL OTHER MATTERS SHOWN ARE NOT TO BE RELIED UPON, OR TO BE CONSIDERED AS EITHER BEING APPROVED OR IN ACCORDANCE WITH APPLICABLE CODES."

BOOK SPECIFICATION
IS PART OF THIS CONTRACT

PROJECT No: 1408010200

DRAWN BY: RST

CHK BY: AM

DWG No:

E-403.00

CADD FILE No:

- RA_Pendant Mounted direct/indirect dimmable 4' linear LED 3 EA
RA-1_Surface Mounted direct/indirect dimmable 4' linear LED 46 EA
RB_Pendant Mounted direct/indirect dimmable 4' channel 28 EA
RC_Cove mounted perimeter LED wallgrazer 74 LF
RD_Surface mounted Wrap Lens LED Channel 47 LF
RE_Ceiling recessed 1'x4' lensed LED 10 EA
RE-1_Ceiling recessed 2'x2' lensed LED 17 EA
RS_Surface mounted fluorescent strip light T5HO 1 EA
RX_Ceiling recessed LED downlight 6 EA
RX-1_Ceiling recessed LED wallwasher 3 EA
RY_Surface mounted decorative LED 3 EA
RAN_Surface mounted 4' T5 linear fluorescent uplight 57 LF
RAO_Cantilevered linear asymmetrical linear LED ceiling uplight 109 LF
RAQ_Surface mounted color tunable dimmable LED panel 2 EA
RAR_Pendant mounted linear LED fixture 6 EA
R13 9 EA
R13_ALT1 9 EA
R17 38 EA
R17_ALT1 38 EA
R18 15 EA
R18_ALT1 15 EA
R19 14 EA
R19_ALT1 14 EA
Exit Light_Ceiling Mounted 17 EA
OS 18 EA
VS 30 EA
RX_EM_Ceiling recessed LED downlight 2 EA
RB_EM_Pendant Mounted direct/indirect dimmable 4' channel 8 EA
RE_EM_Ceiling recessed 1'x4' lensed LED 4 EA
RC_EMNLCove mounted perimeter LED wallgrazer 28 LF
RA-1_EM_Surface Mounted direct/indirect dimmable 4' linear LED 18 EA
RAN_EM_Surface mounted 4' T5 linear fluorescent strip light 8 EA
RAQ_EM_Surface mounted color tunable dimmable LED panel 3 EA

LIGHT FIXTURES IN THIS AREA SHALL BE CONTROLLED BY TIMECLOCK VIA LTG CONTACTOR. SEE DETAIL ON SHEET E-201.00

OVER-RIDE SWITCH

DOWN TO "ELP-2W" (22)

ALL 120V. NORMAL LIGHTING CIRCUITS WITH-IN THIS AREA SHALL BE CONNECTED TO PENAL "LP-3W" (U.O.N.) ALL EMERGENCY CIRCUITS WITH-IN SHALL BE CONNECTED TO PANEL "ELP-2W" (U.O.N.)

ALL 120V NORMAL LIGHTING CIRCUITS WITH-IN THIS AREA SHALL BE CONNECTED TO PANEL "LP-3W-A" (U.O.N.). ALL EMERGENCY LIGHTING CIRCUITS WITH-IN THIS AREA SHALL BE CONNECTED TO PANEL "ELP-2E" (U.O.N.)

EMERGENCY TRANSFER RELAY (SEE WIRING DIAGRAM DWG. E-205.00)

TYPICAL CLASS ROOM LTG CONTROL (SEE WIRING DIAGRAM DWG. E-205.00)

ELECTRICAL CONTRACTOR SHALL REMOVE LIGHT FIXTURES, DEVICES AND CIRCUITING WITH-IN 5 FEET OF SHEARWALLS AND COLUMNS BEING STRUCTURALLY REINFORCED, AS REQUIRED, AND REPLACE SAME AFTER STRUCTURAL WORK IS COMPLETED.

GENERAL LIGHTING PLAN NOTES:

- FOR GENERAL NOTES, SYMBOLS AND ABBREVIATION SEE DRAWING E-002.00
- FOR LIGHTING NOTES SEE DRAWING E-003.00
- FOR FIXTURE SCHEDULE, SEE DRAWING E-004.00
- FOR PANEL SCHEDULES SEE E-100.00 SERIES DRAWINGS.
- FOR LIGHTING CONTROL DIAGRAM SEE E-200.00 SERIES DRAWINGS.
- LOCATE REMOTE LED DRIVERS FOR RAO & RAO FIXTURES IN ACCESSIBLE HUNG CEILING, COORDINATE QUANTITY WITH LIGHTING CONSULTANT.

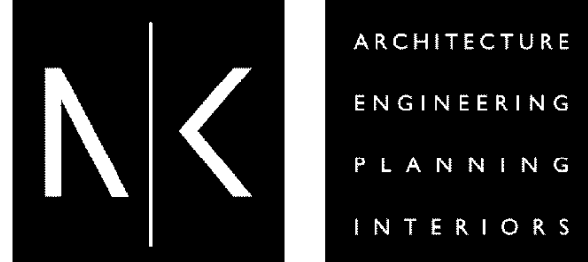
SPECIAL LIGHTING PLAN NOTES:

- ALL FIXTURES "RS" THRU "R20" ARE EXISTING TO REMAIN, EXCEPT WHERE REMOVED FOR STRUCTURAL WORK, WHICH THEN SHALL BE RE-INSTALLED AND RE-CONNECTED TO EXISTING CIRCUITS AND CONTROLS. ELECTRICAL CONTRACTOR SHALL MAINTAIN CONTINUITY OF EXISTING CIRCUITS.
- ALL FIXTURES TYPES "R" WITH AN ADJACENT LETTER (RB) ARE NEW AND SHALL BE CONNECTED TO NEW CIRCUITING AND CONTROLS AS INDICATED.
- ELECTRICAL CONTRACTOR SHALL INCLUDE THE PROTECTING, STORAGE, CLEANING AND RELAMPING OF FIXTURES IN THEIR BID.
- REFER TO SECTION 012300 (ALTERNATES) OF ARCHITECT SPECIFICATION FOR SCHEDULE OF LIGHTING ALTERNATES A, B, C, & D

Takeoff By : AB
Checked By : Nick
Date 02-05-2016

©2015 Robert Detector Associates. All rights reserved.
This drawing and the designs contained herein are issued to provide technical information to the project team. This information is intended for use on this project only.
Reproduction of this drawing in any form or use of the images or information contained herein without the expressed written permission of Robert Detector Associates is strictly prohibited.

ARCHITECTS



THE WOOLWORTH BUILDING
233 BROADWAY SUITE 2150, NEW YORK, NY 10279
t. 212.982.7900 f. 212.982.8111
95 WASHINGTON STREET, MORRISTOWN, NJ 07960
t. 973.539.5353 f. 973.539.0916
www.nkarchitects.com

ALLEN R. KOPELSON, AIA 012618-1
BEN P. LEE, AIA 015723-1
STEPHEN P. ALLIOTTO, AIA 031972-1
PAUL J. DRAGO, AIA 022980-1
DANIEL J. TOPPING, AIA 035092-1
MARK C. von BRADSKY, PE 77543-1

THIS DOCUMENT IS THE EXCLUSIVE PROPERTY OF NADASKAY KOPELSON ARCHITECTS. THE DOCUMENT AND THE INFORMATION IT CONTAINS MAY NOT BE REPRODUCED OR USED FOR OTHER THAN THE SPECIFIC PROJECT FOR WHICH IT WAS PREPARED WITHOUT THE EXPLICIT CONSENT OF NADASKAY KOPELSON ARCHITECTS.

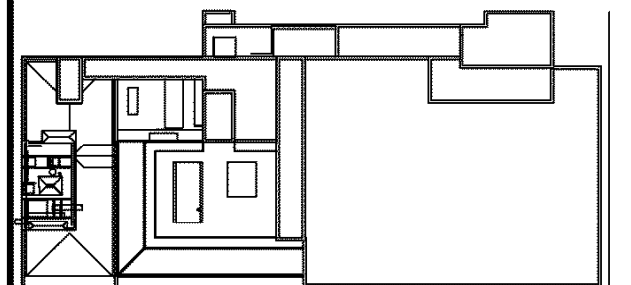
rda Robert Detector Associates
Consulting Engineers

ROD Telecommunications RDMC Mission Critical
19 West 44th Street New York, NY 10036 212.764.7272
proj. mgr. A. MANDATO proj. mgr. R. BROBSON

100% CD SUBMISSION

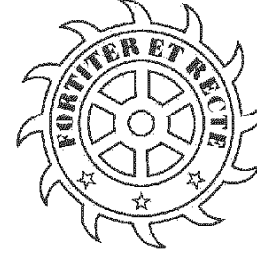
ISSUED FOR
CONSTRUCTION
PHASE 2
11/23/15

2	ADDENDUM #10	11/23/15
1	100% CD SUBMISSION	06/01/15
NO.	DESCRIPTION	DATE



NORTH
EAST 84TH STREET
BLOCK 150
LOT 21
ZONING: R2A, R2B, R2C
ZONING MAP

PROJECT:



THE CHAPIN
SCHOOL

100 EAST END AVE. NEW YORK,
NY 10028

DRAWING TITLE

THIRD FLOOR
LIGHTING PLAN
(PHASE TWO)

SEAL & SIGNATURE

DATE: 06-01-15

PROJECT No: 14080200

DRAWN BY: RST

CHK BY: AM

DWG No:

E-404.00

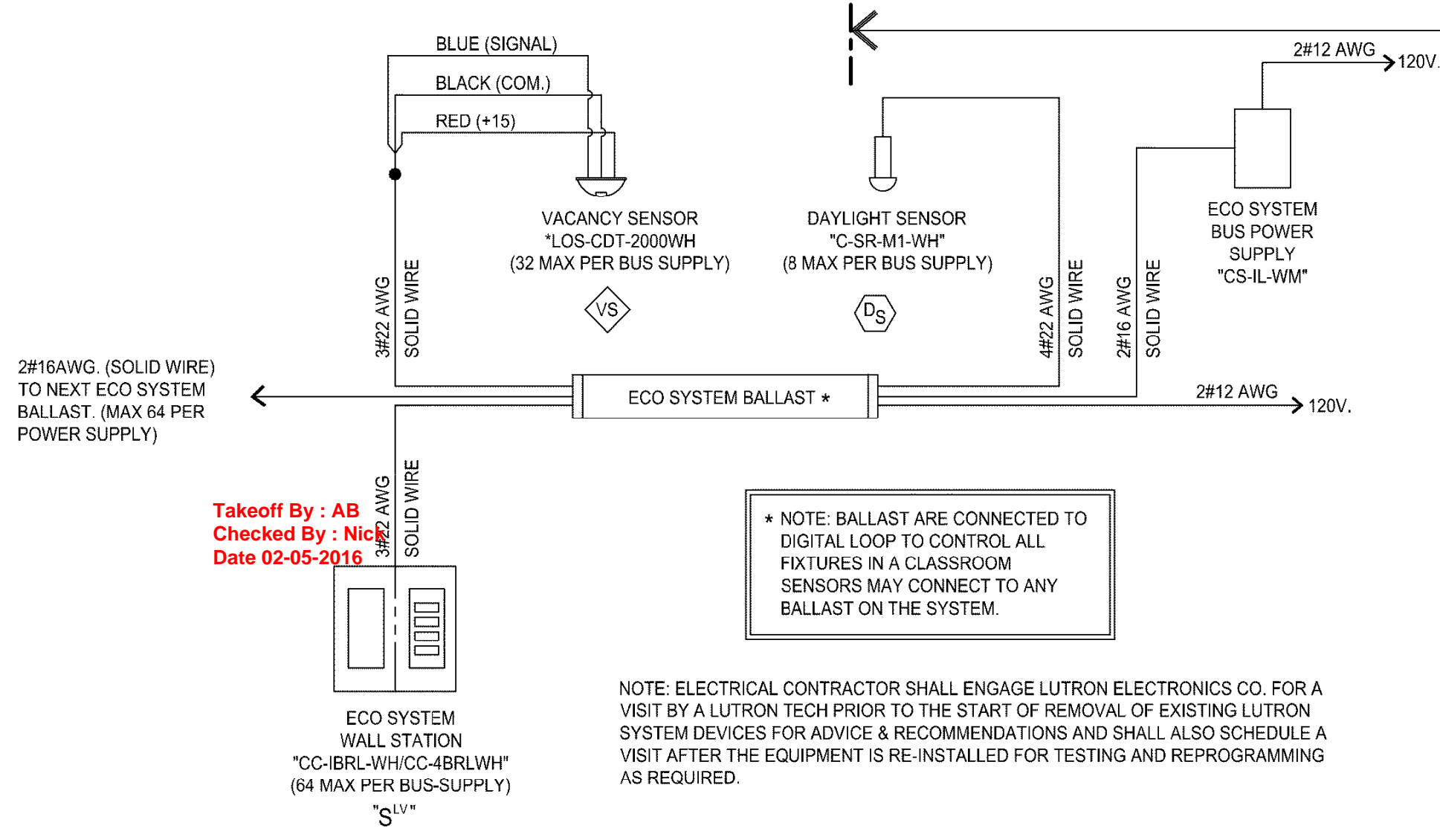
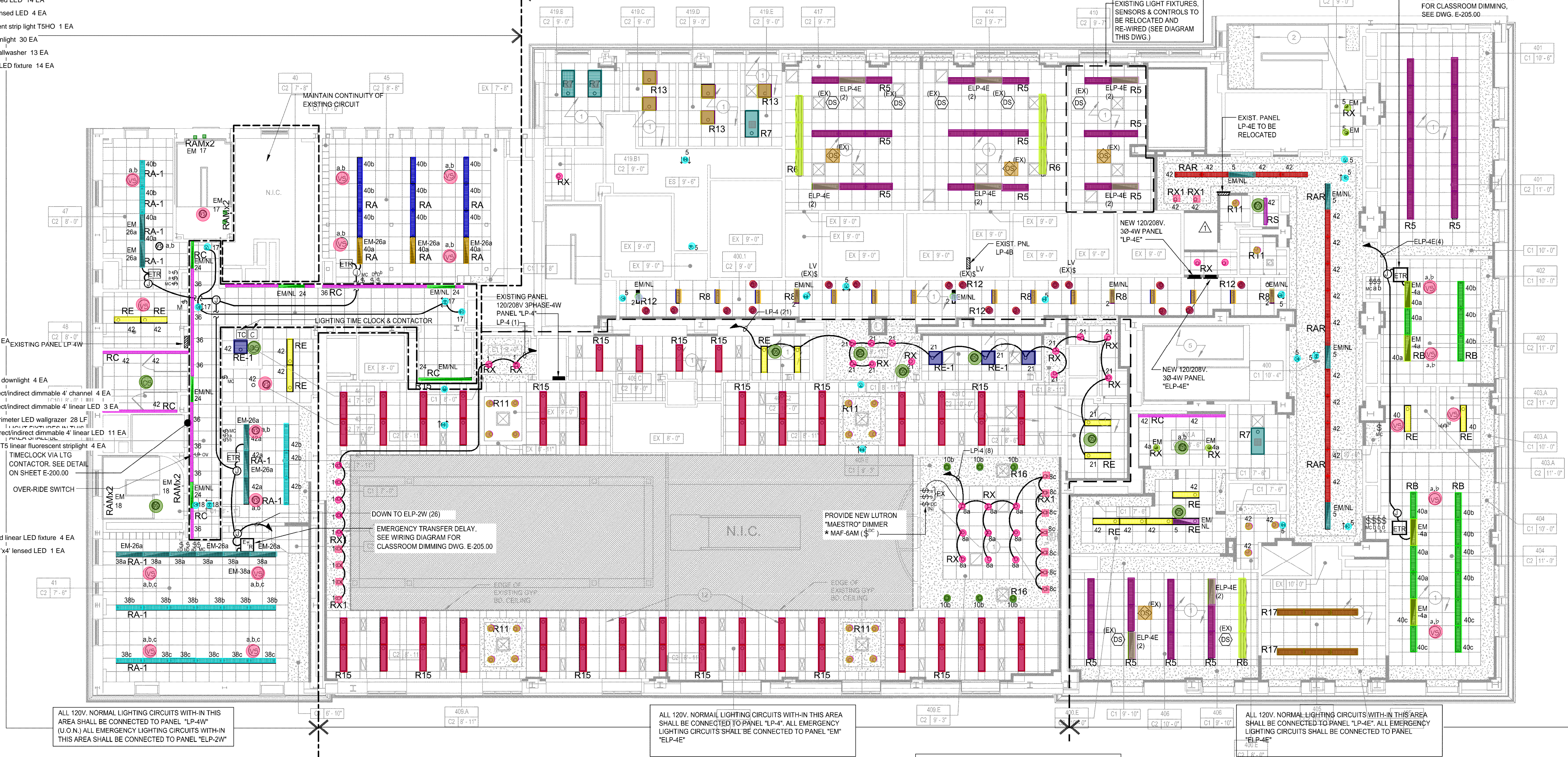
GADO FILE No:

TO THE BEST OF MY KNOWLEDGE, BELIEF AND PROFESSIONAL JUDGMENT, THESE PLANS AND SPECIFICATIONS ARE IN COMPLIANCE WITH THE NEW YORK CITY ENERGY CONSERVATION CODE

THIS PLAN IS APPROVED ONLY FOR WORK INDICATED ON THE APPLICATION SPECIFICATION SHEET.
ALL OTHER MATTERS SHOWN ARE NOT TO BE RELIED UPON, OR TO BE CONSIDERED AS EITHER BEING APPROVED OR IN ACCORDANCE WITH APPLICABLE CODES.

BOOK SPECIFICATION
IS PART OF THIS CONTRACT

- RA_Pendant Mounted direct/indirect dimmable 4' linear LED 9 EA
RA-1_Surface Mounted direct/indirect dimmable 4' linear LED 17 EA
RB_Pendant Mounted direct/indirect dimmable 4' channel 14 EA
RC_Cove mounted perimeter LED wallgrazer 96 LF
RE_Ceiling recessed 1'x4' lensed LED 14 EA
RE-1_Ceiling recessed 2'x2' lensed LED 4 EA
RS_Surface mounted fluorescent strip light T5HO 1 EA
RX_Ceiling recessed LED downlight 30 EA
RX-1_Ceiling recessed LED wallwasher 13 EA
RAR_Pendant mounted linear LED fixture 14 EA
R5 40 EA
R5_ALT1 40 EA
R6_4' 9 EA
R6_4'_ALT1 9 EA
R7 4 EA
R7_ALT1 4 EA
R8 12 EA
R8_ALT1 12 EA
R11 21 EA
R11_ALT1 21 EA
R12 17 EA
R12_ALT1 17 EA
R13 5 EA
R13_ALT1 5 EA
R15 62 EA
R15_ALT1 62 EA
R16 6 EA
R16_ALT1 6 EA
R17 6 EA
R17_ALT1 6 EA
Exit Light_Ceiling Mounted 23 EA
OS 11 EA
VS 20 EA
RX_EM_Ceiling recessed LED downlight 4 EA
RB_EM_Pendant Mounted direct/indirect dimmable 4' channel 4 EA
RA_EM_Pendant Mounted direct/indirect dimmable 4' linear LED 3 EA
RC_EMNML_Cove mounted perimeter LED wallgrazer 28 LF
RA-1_EM_Surface Mounted direct/indirect dimmable 4' linear LED 11 EA
RAM_EM_Surface mounted 4' T5 linear fluorescent strip light 4 EA
R12_EMNML_ALT1 2 EA
R8_EMNML_ALT1 3 EA
R5_EM 8 EA
R5_EM_ALT1 8 EA
OS_EX 4 EA
R12_EMNML 2 EA
RAR_EMNML_Pendant mounted linear LED fixture 4 EA
RE_EMNML_Ceiling recessed 1'x4' lensed LED 1 EA
R8_EMNML 3 EA



EXISTING LUTRON DAYLIGHT DIMMING SYSTEM-WIRING DIAGRAM

NOT TO SCALE

©2015 Robert Detector Associates. All rights reserved.
This drawing and the designs contained herein are issued to provide technical information to the project team. This information is intended for use on this project only.
Reproduction of this drawing in any form or use of the images or information contained herein without the expressed written permission of Robert Detector Associates is strictly prohibited.

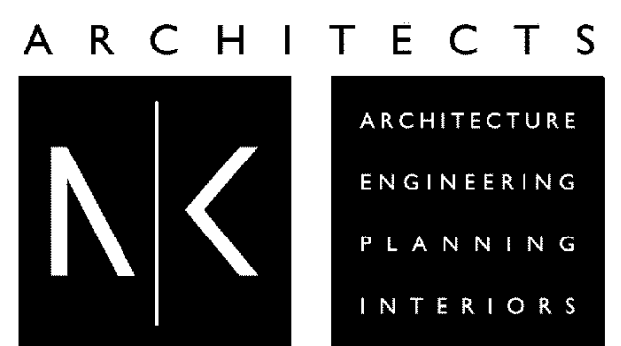
- SPECIAL LIGHTING PLAN NOTES:**
1. ALL FIXTURES "RS" THRU "20" ARE EXISTING TO REMAIN, EXCEPT WHERE REMOVED FOR STRUCTURAL WORK, WHICH THEN SHALL BE RE-INSTALLED AND RE-CONNECTED TO EXISTING CIRCUITS AND CONTROLS. ELECTRICAL CONTRACTOR SHALL MAINTAIN CONTINUITY OF EXISTING CIRCUITS.
 2. ALL FIXTURES TYPES "R" WITH AN ADJACENT LETTER (R.B.) ETC. ARE NEW AND SHALL BE CONNECTED TO NEW CIRCUITING AND CONTROLS AS INDICATED.
 3. ELECTRICAL CONTRACTOR SHALL INCLUDE THE PROTECTING, STORAGE, CLEANING AND RELAMPING OF FIXTURES IN THEIR BID.
 4. REFER TO SECTION 012300 (ALTERNATES) OF ARCHITECT SPECIFICATION FOR SCHEDULE OF LIGHTING ALTERNATES A, B, C & D

- LIGHTING PLAN NOTES:**
1. FOR GENERAL NOTES, SYMBOLS AND ABBREVIATION SEE DRAWING E-002.00
 2. FOR LIGHTING NOTES SEE DRAWING E-003.00
 3. FOR FIXTURE SCHEDULE, SEE DRAWING E-004.00
 4. FOR PANEL SCHEDULES SEE E-100.00 SERIES DRAWINGS.
 5. FOR LIGHTING CONTROL DIAGRAM SEE E-200.00 SERIES DRAWINGS.

TO THE BEST OF MY KNOWLEDGE, BELIEF AND PROFESSIONAL JUDGMENT, THESE PLANS AND SPECIFICATIONS ARE IN COMPLIANCE WITH THE NEW YORK CITY ENERGY CONSERVATION CODE

THIS PLAN IS APPROVED ONLY FOR WORK INDICATED ON THE APPLICATION SPECIFICATION SHEET.
ALL OTHER MATTERS SHOWN ARE NOT TO BE RELIED UPON, OR TO BE CONSIDERED AS EITHER BEING APPROVED OR IN ACCORDANCE WITH APPLICABLE CODES.

BOOK SPECIFICATION
IS PART OF THIS CONTRACT



THE WOOLWORTH BUILDING
233 BROADWAY SUITE 2150, NEW YORK, NY 10279
t. 212.982.7900 f. 212.982.8111
95 WASHINGTON STREET, MORRISTOWN, NJ 07960
t. 973.539.5353 f. 973.539.0916
www.nkarchitects.com

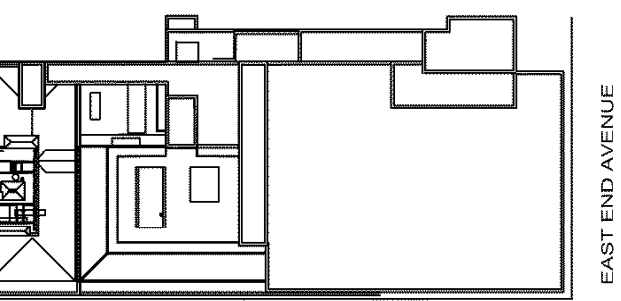
ALLEN R. KOPELSON, AIA 012618-1
BEN P. LEE, AIA 015723-1
STEPHEN P. ALLIOTTO, AIA 031972-1
PAUL J. DRAGO, AIA 022980-1
DANIEL J. TOPPING, AIA 035092-1
MARK C. von BRADSKY, PE 77543-1

THIS DOCUMENT IS THE EXCLUSIVE PROPERTY OF NADASKAY KOPELSON ARCHITECTS. THE DOCUMENT AND THE INFORMATION IT CONTAINS MAY NOT BE REPRODUCED OR USED FOR OTHER THAN THE SPECIFIC PROJECT FOR WHICH IT WAS PREPARED WITHOUT THE EXPLICIT CONSENT OF NADASKAY KOPELSON ARCHITECTS.

rda Robert Detector Associates
Consulting Engineers
RDT • Telecommunications RDMC • Mission Critical
19 West 64th Street New York, NY 10036 212.764.7722
proj. mgr. A. MANDATO proj. mgr. R. BROBSON

100% CD SUBMISSION
ISSUED FOR CONSTRUCTION
PHASE 2
11/23/15

2	ADDENDUM #10	11/23/15
1	100% CD SUBMISSION	06/01/15
NO.	DESCRIPTION	DATE



NORTH
EAST 84TH STREET
BLOCK
LOT
ZONING
ZONING MAP

PROJECT:

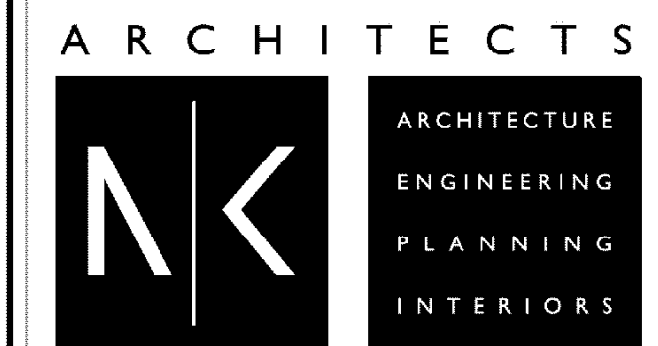
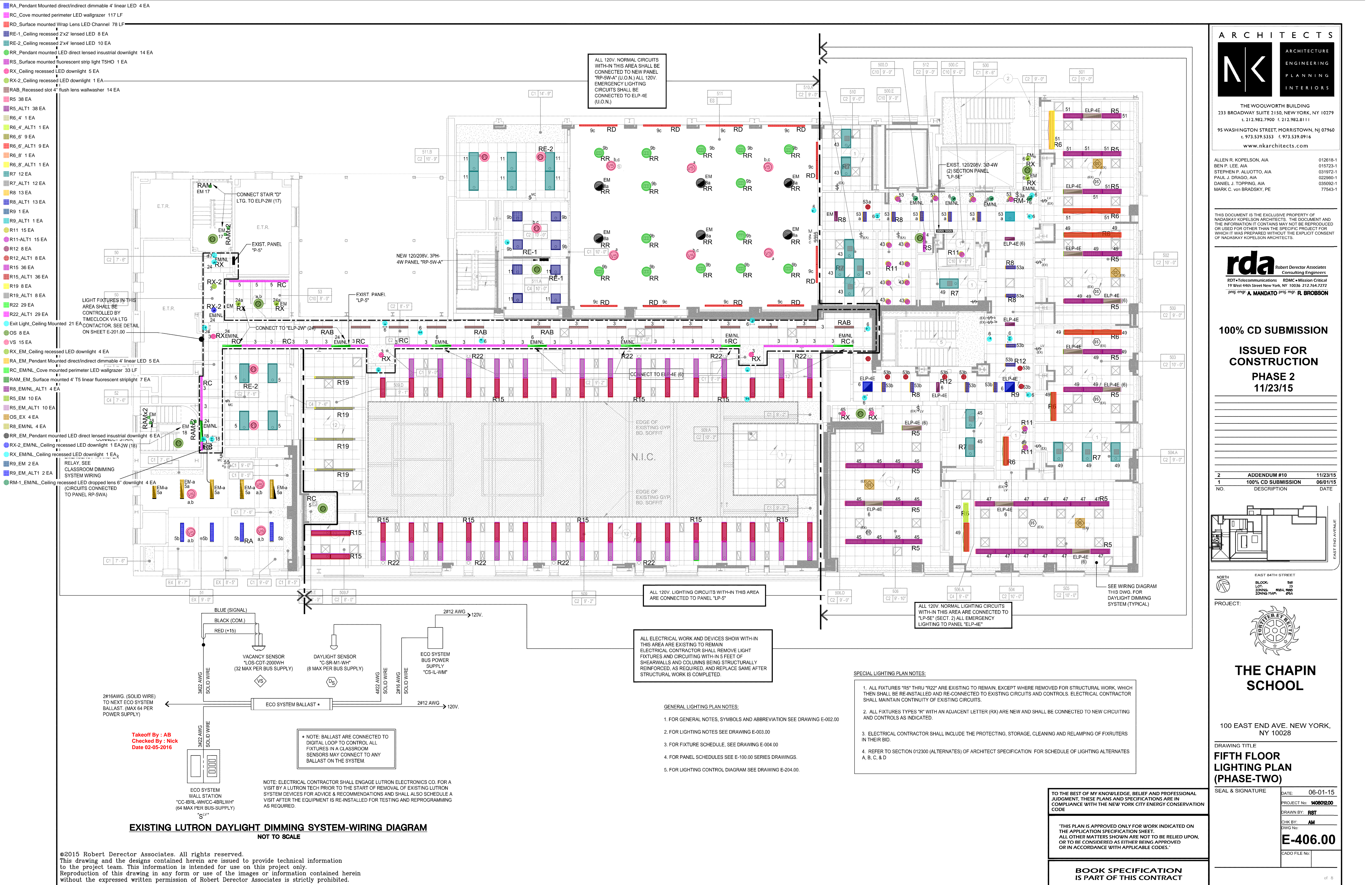


THE CHAPIN SCHOOL

100 EAST END AVE. NEW YORK, NY 10028

DRAWING TITLE
FOURTH FLOOR LIGHTING PLAN (PHASE-TWO)

SEAL & SIGNATURE	DATE: 06-01-15
	PROJECT No: 1080200
	DRAWN BY: RST
	CHECK BY: AM
	DWG No: E-405.00
	CADD FILE No:



THE WOOLWORTH BUILDING
233 BROADWAY SUITE 2150, NEW YORK, NY 10279
t. 212.982.7900 f. 212.982.8111
95 WASHINGTON STREET, MORRISTOWN, NJ 07960
t. 973.539.5353 f. 973.539.0916
www.nkarchitects.com

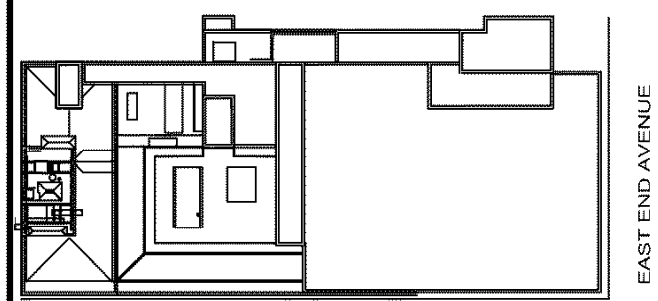
ALLEN R. KOPELSON, AIA 012618-1
BEN P. LEE, AIA 015723-1
STEPHEN P. ALLIOTTO, AIA 031972-1
PAUL J. DRAGO, AIA 022990-1
DANIEL J. TOPPING, AIA 035092-1
MARK C. VAN BRADSKY, PE 77543-1

THIS DOCUMENT IS THE EXCLUSIVE PROPERTY OF NADASKAY KOPELSON ARCHITECTS. THE DOCUMENT AND THE INFORMATION IT CONTAINS MAY NOT BE REPRODUCED OR USED FOR OTHER THAN THE SPECIFIC PROJECT FOR WHICH IT WAS PREPARED WITHOUT THE EXPLICIT CONSENT OF NADASKAY KOPELSON ARCHITECTS.

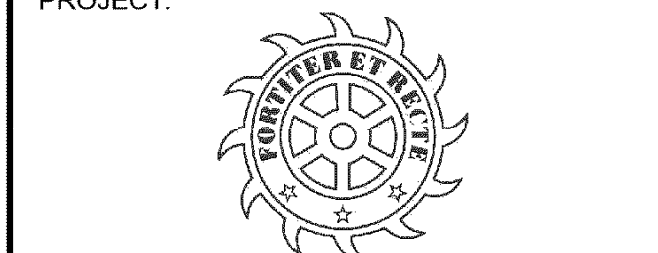
rda Robert Director Associates
Consulting Engineers
RDT • Telecommunications • RDMC • Mission Critical
19 West 64th Street New York, NY 10036 212.764.7272
proj. mgr. A. MANDATO proj. mgr. R. BROBSON

100% CD SUBMISSION
ISSUED FOR CONSTRUCTION
PHASE 2
11/23/15

2	ADDENDUM #10	11/23/15
1	100% CD SUBMISSION	06/01/15
NO.	DESCRIPTION	DATE



NORTH
EAST 84TH STREET
BLOCK LOT 150
ZONING: R2A, R2B, R2C
ZONING MAP: 25A

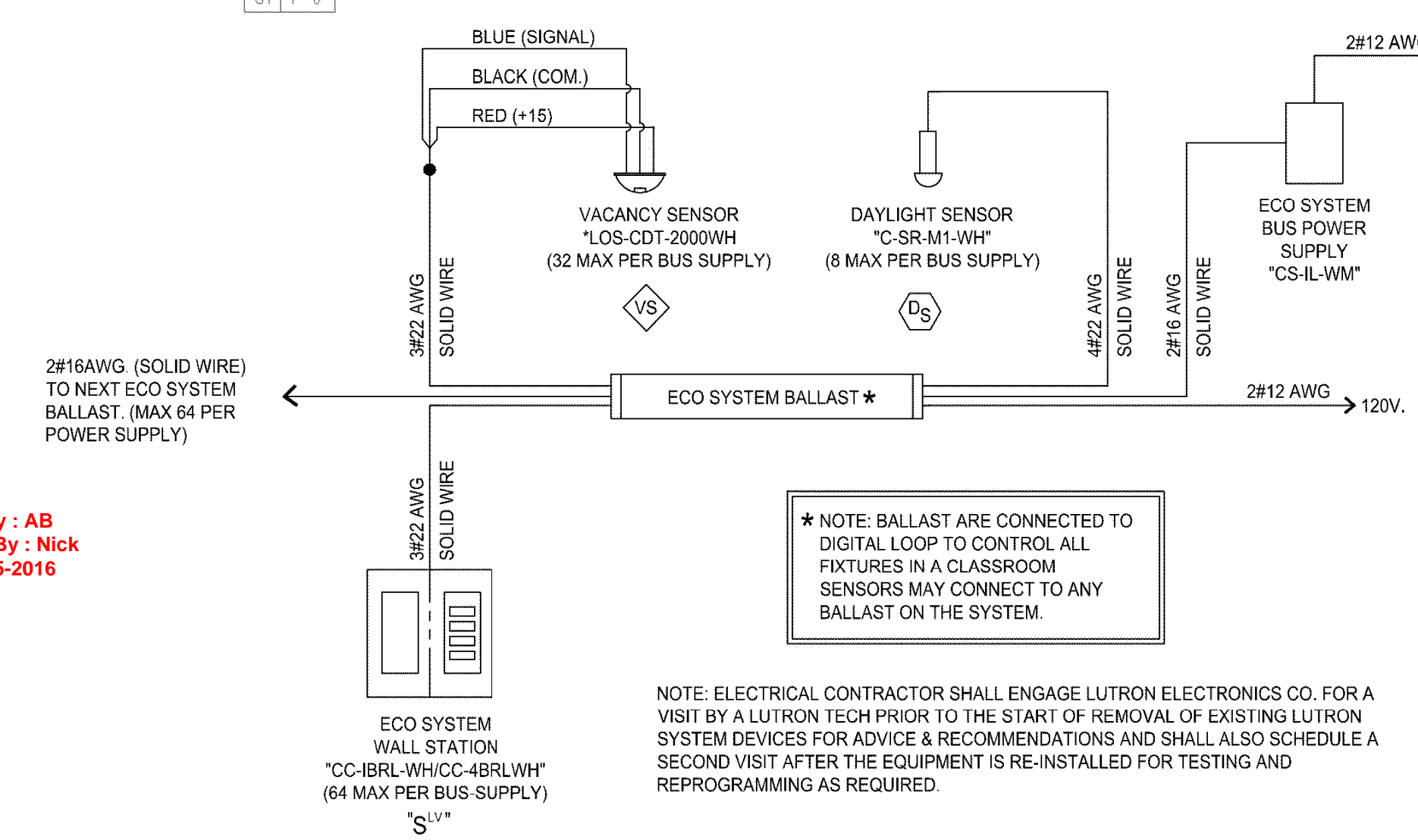
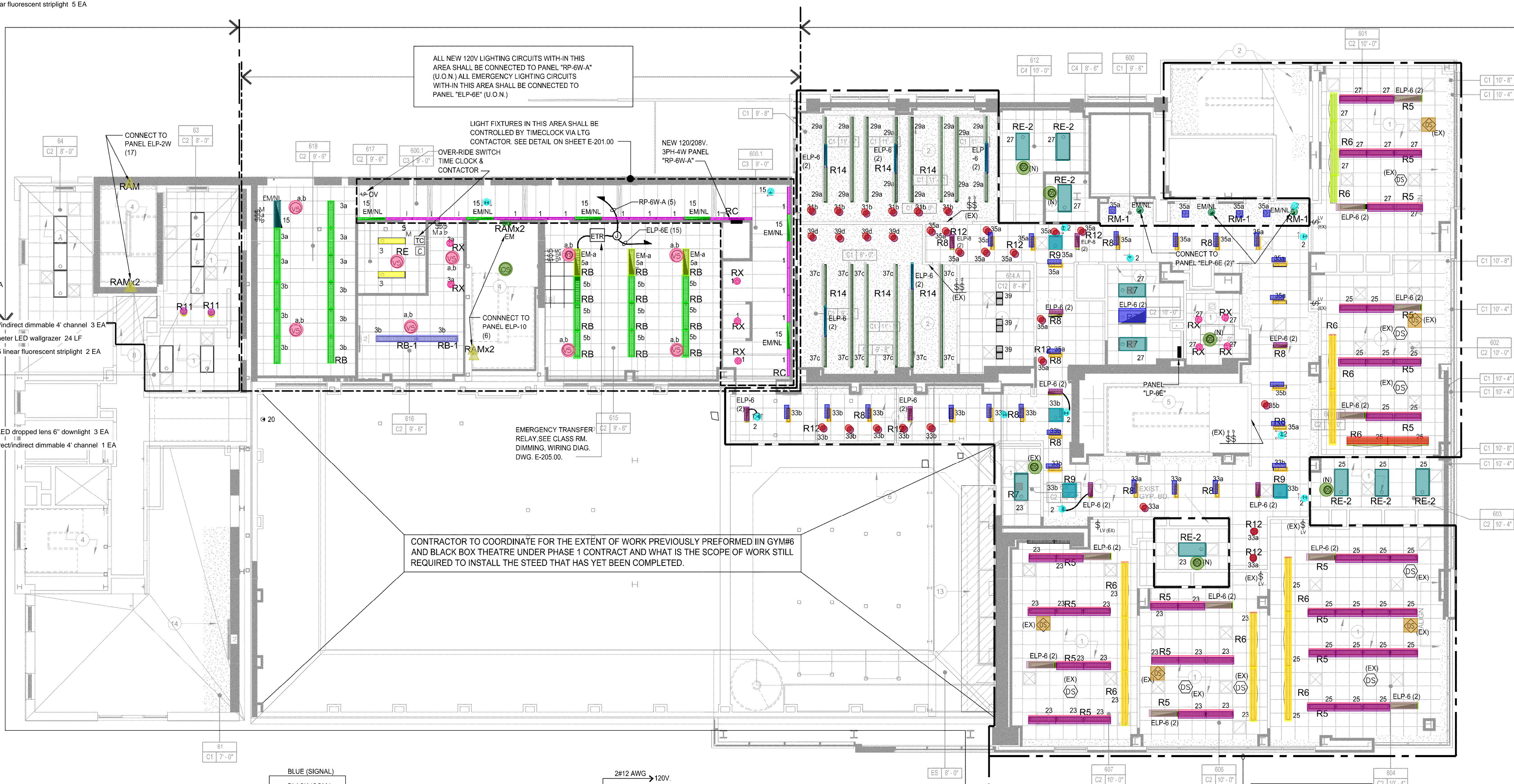


THE CHAPIN SCHOOL
100 EAST END AVE., NEW YORK, NY 10028

DRAWING TITLE
FIFTH FLOOR
LIGHTING PLAN
(PHASE-TWO)

SEAL & SIGNATURE	DATE: 06-01-15
DRAWN BY: RST	PROJECT No: 10802100
CHECK BY: AM	DWG No: E-406.00
CADD FILE No:	

- RB_Pendant Mounted direct/indirect dimmable 4' channel 20 EA
RB-1_Pendant Mounted direct/indirect dimmable 6' channel 2 EA
RC_Cove mounted perimeter LED wallgrazer 62 LF
RE_Ceiling recessed 1'x4' lensed LED 2 EA
RE-2_Ceiling recessed 2'x4' lensed LED 7 EA
RM-1_Ceiling recessed LED dropped lens 6" downlight 4 EA
RX_Ceiling recessed LED downlight 9 EA
▲ RAM_Surface mounted 4' T5 linear fluorescent striplight 5 EA
R5 45 EA
R5_ALT1 45 EA
R6_4' 4 EA
R6_4'_ALT1 4 EA
R6_6' 2 EA
R6_6'_ALT1 2 EA
R6_8' 10 EA
R6_8'_ALT1 10 EA
R7 3 EA
R7_ALT1 3 EA
R8 24 EA
R8_ALT1 24 EA
R9 4 EA
R9_ALT1 4 EA
R11 2 EA
R11-ALT1 2 EA
R12 29 EA
R12_ALT1 29 EA
R14 170 LF
R14_ALT1 170 LF
Exit Light_Ceiling Mounted 12 EA
OS 7 EA
VS 9 EA
RB_EM_Pendant Mounted direct/indirect dimmable 4' channel 20 EA
RC_EM/NL_Cove mounted perimeter LED wallgrazer 24 LF
RAM_EM_Surface mounted 4' T5 linear fluorescent striplight 2 EA
R8_EM/NL_ALT1 9 EA
R5_EM 10 EA
R5_EM_ALT1 10 EA
OS_EX 5 EA
R8_EM/NL 9 EA
RM-1_EM/NL_Ceiling recessed LED dropped lens 6" downlight 4 EA
RB_EM/NL_Pendant Mounted direct/indirect dimmable 4' channel 20 EA
R14_EM 20 LF
R14_EM_ALT1 20 LF
R7_EM 1 EA
R7_EM_ALT1 1 EA



LIGHTING PLAN NOTES:

1. FOR GENERAL NOTES, SYMBOLS AND ABBREVIATION SEE DRAWING E-002.00
2. FOR LIGHTING NOTES SEE DRAWING E-003.00
3. FOR FIXTURE SCHEDULE, SEE DRAWING E-004.00
4. FOR PANEL SCHEDULES SEE E-100.00 SERIES DRAWINGS.
5. FOR LIGHTING CONTROL DIAGRAM SEE E-200.00 SERIES DRAWINGS.
6. ALL EXISTING AND NEW LIGHTING 120V, BRANCH CIRCUITS SHALL BE CONNECTED TO PANEL "LP-6E" (U.O.N.).

SPECIAL LIGHTING PLAN NOTES:

1. ALL FIXTURES "RS" THRU "20" ARE EXISTING TO REMAIN, EXCEPT WHERE REMOVED FOR STRUCTURAL WORK, WHICH THEN SHALL BE RE-INSTALLED AND RE-CONNECTED TO EXISTING CIRCUITS AND CONTROLS. ELECTRICAL CONTRACTOR SHALL MAINTAIN CONTINUITY OF EXISTING CIRCUITS.
2. ALL FIXTURES TYPES "R" WITH AN ADJACENT LETTER (R.B.) ETC. ARE NEW AND SHALL BE CONNECTED TO NEW CIRCUITING AND CONTROLS AS INDICATED.
3. ELECTRICAL CONTRACTOR SHALL INCLUDE THE PROTECTING, STORAGE, CLEANING AND RELAMPING OF FIXTURES IN THEIR BID.
4. REFER TO SECTION 012300 (ALTERNATES) OF ARCHITECT SPECIFICATION FOR SCHEDULE OF LIGHTING ALTERNATES A, B, C, & D

ELECTRICAL CONTRACTOR SHALL REMOVE LIGHT FIXTURES, DEVICES AND CIRCUITING WITH-IN 5 FEET OF SHEARWALLS AND COLUMNS BEING STRUCTURALLY REINFORCED, AS REQUIRED, AND REPLACE SAME AFTER STRUCTURAL WORK IS COMPLETED.

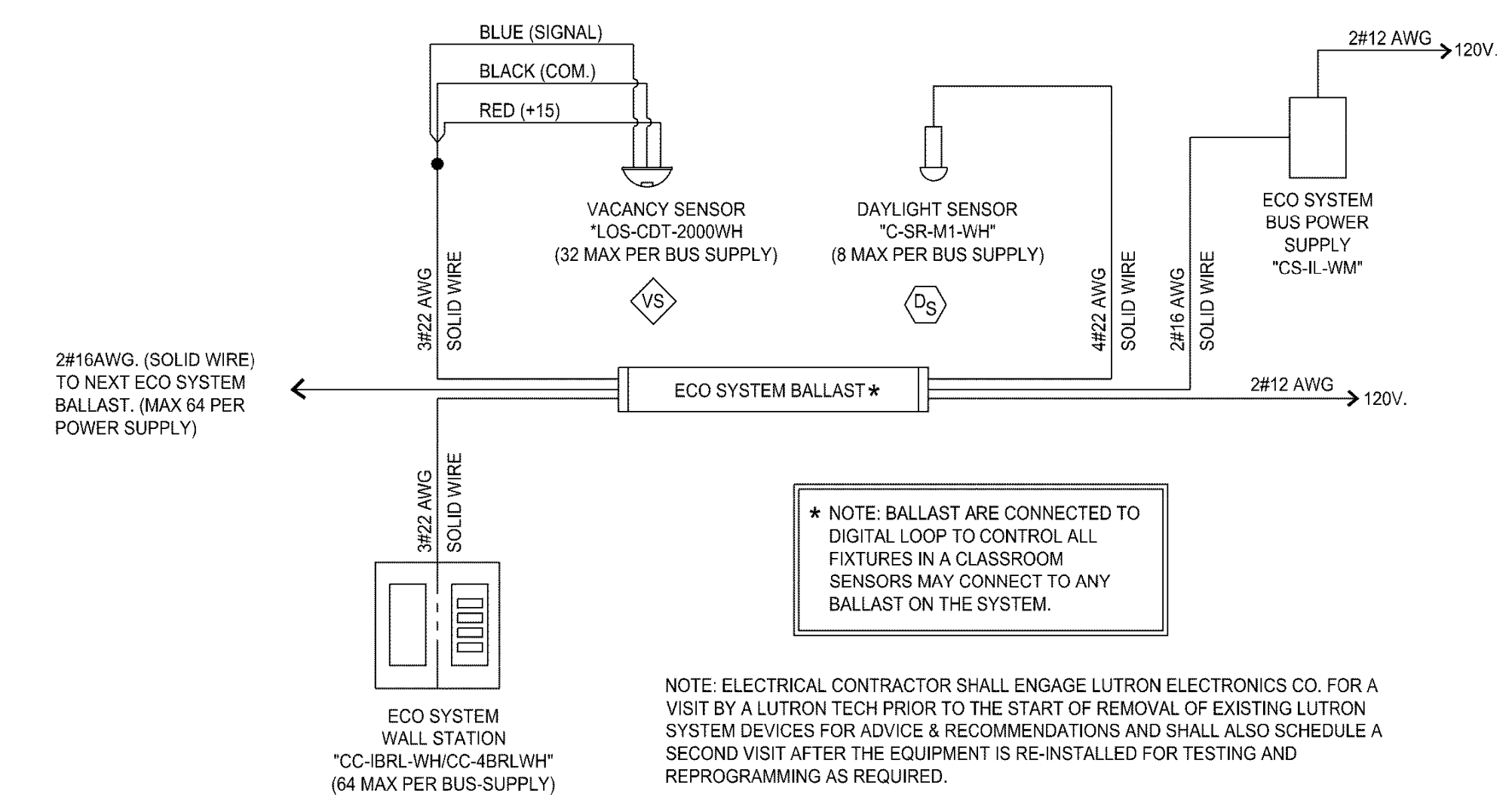
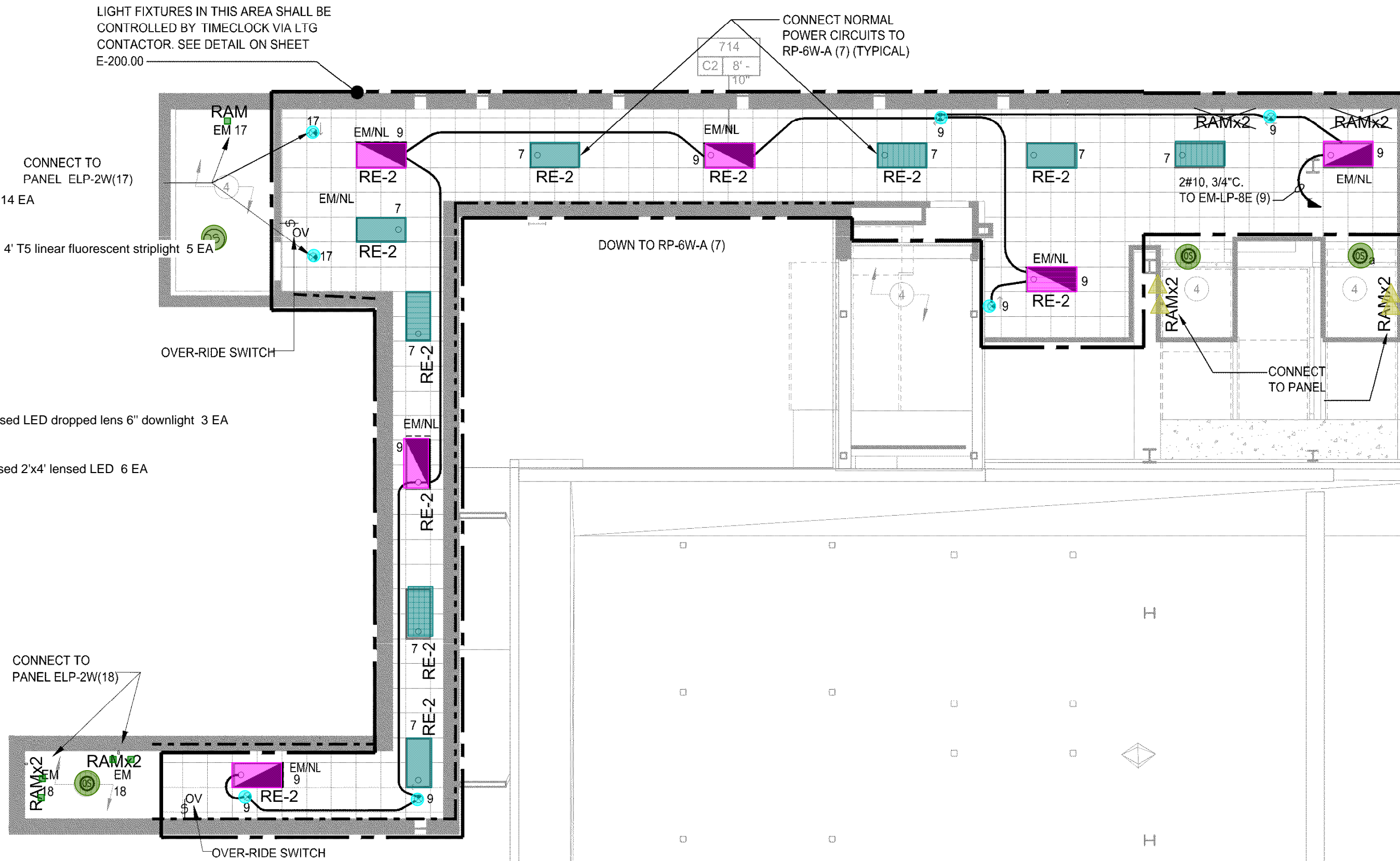
TO THE BEST OF MY KNOWLEDGE, BELIEF AND PROFESSIONAL JUDGMENT, THESE PLANS AND SPECIFICATIONS ARE IN COMPLIANCE WITH THE NEW YORK CITY ENERGY CONSERVATION CODE

"THIS PLAN IS APPROVED ONLY FOR WORK INDICATED ON THE APPLICATION SPECIFICATION SHEET.
ALL OTHER MATTERS SHOWN ARE NOT TO BE RELIED UPON, OR TO BE CONSIDERED AS EITHER BEING APPROVED OR IN ACCORDANCE WITH APPLICABLE CODES."

**BOOK SPECIFICATION
IS PART OF THIS CONTRACT**

ARCHITECTS										
	<div style="background-color: black; color: white; padding: 10px; text-align: center;"> ARCHITECTURE ENGINEERING PLANNING INTERIORS </div>									
THE WOOLWORTH BUILDING 233 BROADWAY SUITE 2150, NEW YORK, NY 10279 t. 212.982.7900 f. 212.982.8111										
95 WASHINGTON STREET, MORRISTOWN, NJ 07960 t. 973.539.5353 f. 973.539.0916 www.nkarchitects.com										
ALLEN R. KOPELSON, AIA BEN P. LEE, AIA STEPHEN P. ALUOTTO, AIA PAUL J. DRAGO, AIA DANIEL J. TOPPING, AIA MARK C. von BRADSKY, PE	012618-1 015723-1 031972-1 022980-1 035092-1 77543-1									
THIS DOCUMENT IS THE EXCLUSIVE PROPERTY OF NADASKAY KOPELSON ARCHITECTS. THE DOCUMENT AND THE INFORMATION IT CONTAINS MAY NOT BE REPRODUCED OR USED FOR OTHER THAN THE SPECIFIC PROJECT FOR WHICH IT WAS PREPARED WITHOUT THE EXPLICIT CONSENT OF NADASKAY KOPELSON ARCHITECTS.										
<div style="display: flex; align-items: center;"> <div style="margin-left: 10px;"> Robert Director Associates Consulting Engineers <small> RDT • Telecommunications RDMC • Mission Critical 19 West 44th Street New York, NY 10036 212.764.7272 proj. engr. A. MANDATO proj. mgr. R. BROBSON </small> </div> </div>										
<h1 style="margin: 0;">100% CD SUBMISSION</h1> <h2 style="margin: 0;">ISSUED FOR CONSTRUCTION</h2> <h3 style="margin: 0;">PHASE 2</h3> <h3 style="margin: 0;">11/23/15</h3>										
<table border="1" style="width: 100%; border-collapse: collapse;"> <tr> <td style="width: 5%; text-align: center;">2</td> <td style="width: 85%;">ADDENDUM #10</td> <td style="width: 10%; text-align: center;">11/23/15</td> </tr> <tr> <td style="text-align: center;">1</td> <td>100% CD SUBMISSION</td> <td style="text-align: center;">06/01/15</td> </tr> <tr> <td style="text-align: center;">NO.</td> <td>DESCRIPTION</td> <td style="text-align: center;">DATE</td> </tr> </table>		2	ADDENDUM #10	11/23/15	1	100% CD SUBMISSION	06/01/15	NO.	DESCRIPTION	DATE
2	ADDENDUM #10	11/23/15								
1	100% CD SUBMISSION	06/01/15								
NO.	DESCRIPTION	DATE								
<div style="display: flex; align-items: center;"> <div style="margin-left: 10px; writing-mode: vertical-rl; transform: rotate(180deg);">EAST END AVENUE</div> </div>										
<div style="display: flex; justify-content: space-between;"> <div style="text-align: center;"> <p>NORTH</p> </div> <div style="text-align: center;"> <p>EAST 84TH STREET</p> <p>B61 LOT: 23 ZONING: R6A, R80 ZONING MAP: 05A</p> </div> </div>										
PROJECT: <div style="text-align: center; margin-top: 20px;"> </div>										
<h1 style="margin: 0;">THE CHAPIN SCHOOL</h1>										
100 EAST END AVE. NEW YORK, NY 10028										
DRAWING TITLE <h2 style="margin: 0;">SIXTH FLOOR LIGHTING PLAN (PHASE-TWO)</h2>										
SEAL & SIGNATURE	DATE: 06-01-15 PROJECT No: 140801200 DRAWN BY: RST CHK BY: AM DWG No: E-407.00									
CADDO FILE No:										

- RE-1_Ceiling recessed 2'x2' lensed LED 4 EA
RE-2_Ceiling recessed 2'x4' lensed LED 8 EA
RS_Surface mounted fluorescent strip light T5HO 1 EA
RAM_Surface mounted 4' T5 linear fluorescent striplight 4 EA
R5 56 EA
R5_ALT1 56 EA
R6_4'_ALT1 3 EA
R6_6'_ALT1 3 EA
R6_6'_ALT1 5 EA
R6_8'_ALT1 12 EA
R6_8'_ALT1 12 EA
R7 6 EA
R7_ALT1 6 EA
R8 14 EA
R8_ALT1 14 EA
R9 3 EA
R9_ALT1 3 EA
R11 14 EA
R11_ALT1 14 EA
R13 1 EA
R13_ALT1 1 EA
Exit Light_Ceiling Mounted 14 EA
OS 6 EA
RAM_EM_Surface mounted 4' T5 linear fluorescent striplight 5 EA
R8_EMNLT1 4 EA
R5_EM 13 EA
R5_EM_ALT1 13 EA
OS_EX 11 EA
R8_EMNLT 4 EA
R11_EMNLT 8 EA
RM-1_EMNLT_Ceiling recessed LED dropped lens 6" downlight 3 EA
R11_EM 8 EA
RE-2_EMNLT_Ceiling recessed 2'x4' lensed LED 6 EA



EXISTING LUTRON DAYLIGHT DIMMING SYSTEM-WIRING DIAGRAM
NOT TO SCALE

©2015 Robert Detor Associates. All rights reserved.
This drawing and the designs contained herein are issued to provide technical information to the project team. This information is intended for use on this project only.
Reproduction of this drawing in any form or use of the images or information contained herein without the expressed written permission of Robert Detor Associates is strictly prohibited.

- LIGHTING PLAN NOTES:**
- FOR GENERAL NOTES, SYMBOLS AND ABBREVIATION SEE DRAWING E-002.00
 - FOR LIGHTING NOTES SEE DRAWING E-003.00
 - FOR FIXTURE SCHEDULE, SEE DRAWING E-004.00
 - FOR PANEL SCHEDULES SEE E-100.00 SERIES DRAWINGS.
 - FOR LIGHTING CONTROL DIAGRAM SEE E-200.00 SERIES DRAWINGS.
 - ALL EXISTING AND NEW LIGHTING 120V. BRANCH CIRCUITS SHALL BE CONNECTED TO NEW PANEL "LP-7E" (U.O.N.)

- SPECIAL LIGHTING PLAN NOTES:**
- ALL FIXTURES "R5" THRU "R20" ARE EXISTING TO REMAIN, EXCEPT WHERE REMOVED FOR STRUCTURAL WORK, WHICH THEN SHALL BE RE-INSTALLED AND RE-CONNECTED TO EXISTING CIRCUITS AND CONTROLS. ELECTRICAL CONTRACTOR SHALL MAINTAIN CONTINUITY OF EXISTING CIRCUITS.
 - ALL FIXTURES TYPES "R" WITH AN ADJACENT LETTER (R.B.) ETC. ARE NEW AND SHALL BE CONNECTED TO NEW CIRCUITING AND CONTROLS AS INDICATED.
 - ELECTRICAL CONTRACTOR SHALL INCLUDE THE PROTECTING, STORAGE, CLEANING AND RELAMPING OF FIXTURES IN THEIR BID.
 - REFER TO SECTION 012300 (ALTERNATES) OF ARCHITECT SPECIFICATION FOR SCHEDULE OF LIGHTING ALTERNATES A, B, C, & D

TO THE BEST OF MY KNOWLEDGE, BELIEF AND PROFESSIONAL JUDGMENT, THESE PLANS AND SPECIFICATIONS ARE IN COMPLIANCE WITH THE NEW YORK CITY ENERGY CONSERVATION CODE

THIS PLAN IS APPROVED ONLY FOR WORK INDICATED ON THE APPLICATION SPECIFICATION SHEET. ALL OTHER MATTERS SHOWN ARE NOT TO BE RELIED UPON, OR TO BE CONSIDERED AS EITHER BEING APPROVED OR IN ACCORDANCE WITH APPLICABLE CODES.

BOOK SPECIFICATION IS PART OF THIS CONTRACT

ARCHITECTS

THE WOOLWORTH BUILDING
233 BROADWAY SUITE 2150, NEW YORK, NY 10279
t. 212.982.7900 f. 212.982.8111

95 WASHINGTON STREET, MORRISTOWN, NJ 07960
t. 973.539.5353 f. 973.539.0916
www.nkarchitects.com

ALLEN R. KOPELSON, AIA 012618-1
BEN P. LEE, AIA 015723-1
STEPHEN P. ALLOTTO, AIA 031972-1
PAUL J. DRAGO, AIA 022980-1
DANIEL J. TOPPING, AIA 035092-1
MARK C. VAN BRADSKY, PE 77543-1

THIS DOCUMENT IS THE EXCLUSIVE PROPERTY OF NADASKAY KOPELSON ARCHITECTS. THE DOCUMENT AND THE INFORMATION IT CONTAINS MAY NOT BE REPRODUCED OR USED FOR OTHER THAN THE SPECIFIC PROJECT FOR WHICH IT WAS PREPARED WITHOUT THE EXPLICIT CONSENT OF NADASKAY KOPELSON ARCHITECTS.

rda Robert Detor Associates
Consulting Engineers
RDT • Telecommunications RDMC • Mission Critical
19 West 64th Street New York, NY 10036 212.764.7272
proj. engr. A. MANDATO proj. mgr. R. BROBSON

100% CD SUBMISSION

ISSUED FOR CONSTRUCTION

PHASE 2

11/23/15

2	ADDENDUM #10	11/23/15
1	100% CD SUBMISSION	06/01/15
NO.	DESCRIPTION	DATE

NORTH

EAST 84TH STREET

BLOCK: 150
LOT: 23
ZONING: R10A, R80
ZONING MAP: D5A

PROJECT:

THE CHAPIN SCHOOL

100 EAST END AVE. NEW YORK, NY 10028

DRAWING TITLE

SEVENTH FLOOR LIGHTING PLAN (PHASE-TWO)

SEAL & SIGNATURE

DATE: 06-01-15

PROJECT No: 14080200

DRAWN BY: RST

CHK BY: AM

DWG No: E-408.00

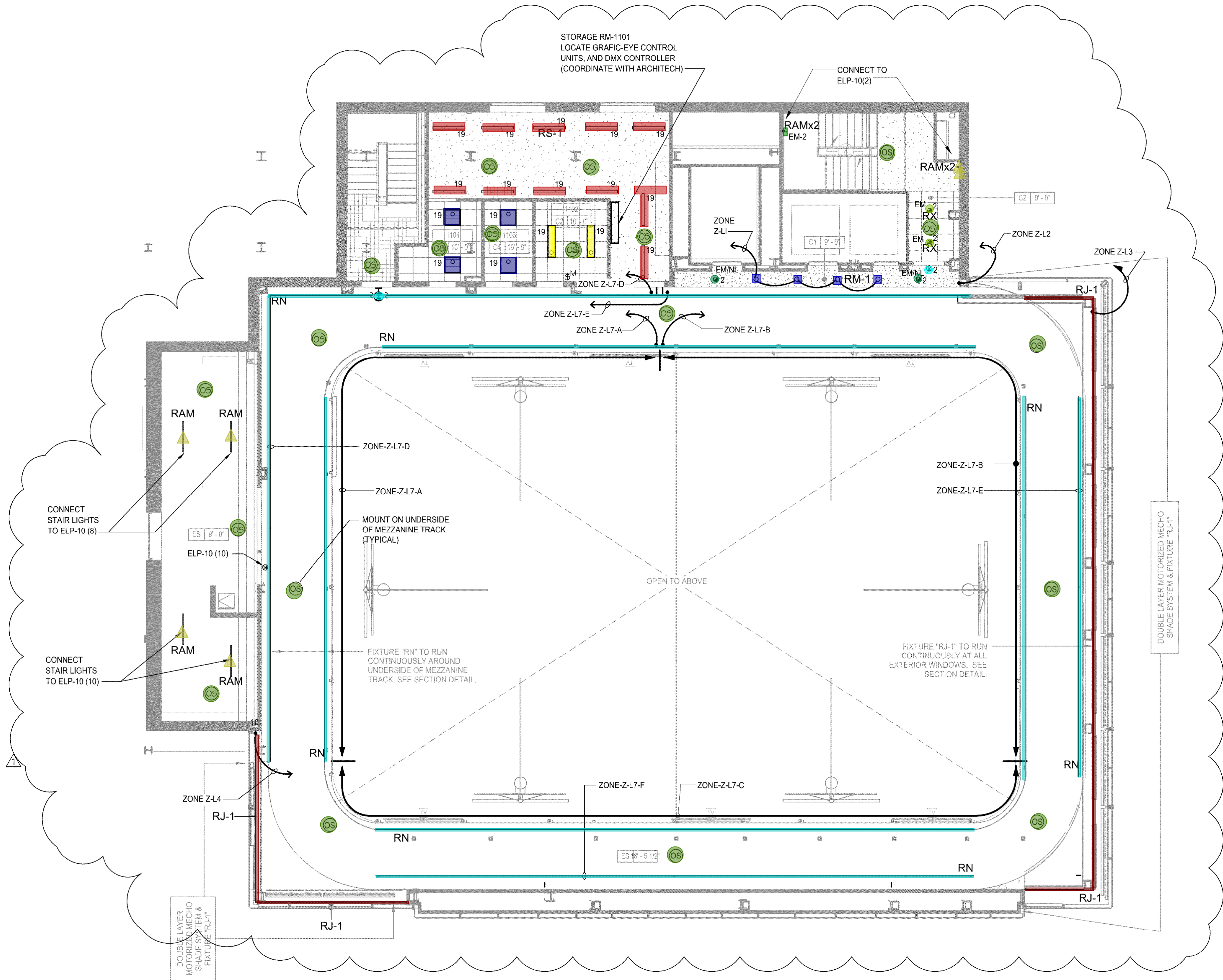
CADD FILE No:

of 8

- RB_Pendant Mounted direct/indirect dimmable 4' channel 36 EA
RC_Cove mounted perimeter LED wallgrazer 248 LF
RE_Ceiling recessed 1'x4' lensed LED 16 EA
RE-1_Ceiling recessed 2'x2' lensed LED 8 EA
RE-2_Ceiling recessed 2'x4' lensed LED 4 EA
RM-1_Ceiling recessed LED dropped lens 6" downlight 4 EA
RS-1_Pendant mounted fluorescent strip light T5HO 16 EA
RX_Ceiling recessed LED downlight 10 EA
RX-2_Ceiling recessed LED downlight 2 EA
RAC_Ceiling Recessed wet location 3-1/2" diameter lensed LED downlight 8 EA
RAM_Surface mounted 4' T5 linear fluorescent striplight 1 EA
Exit Light_Ceiling Mounted 11 EA
OS 34 EA
VS 10 EA
RX_EM_Ceiling recessed LED downlight 19 EA
RB_EM_Pendant Mounted direct/indirect dimmable 4' channel 9 EA
RE_EM_Ceiling recessed 1'x4' lensed LED 6 EA
RC_EM/NL_Cove mounted perimeter LED wallgrazer 34 LF
RAM_EM_Surface mounted 4' T5 linear fluorescent striplight 9 EA
RM-1_EM/NL_Ceiling recessed LED dropped lens 6" downlight 3 EA
RS-1_EM_Pendant mounted fluorescent strip light T5HO 7 EA
RE-1_EM_Ceiling recessed 2'x2' lensed LED 4 EA



- RE-Ceiling recessed 1'x4' lensed LED 2 EA
RE-1_Ceiling recessed 2'x2' lensed LED 4 EA
RJ-1_Bracket mounted dimmable LED wall grazer at GYM Curtain 132 LF
RM-1_Ceiling recessed LED dropped lens 6" downlight 4 EA
RN_Surface mounted flexible LED strip with GYM track structure 512 LF
RS-1_Pendant mounted fluorescent strip light T5HO 12 EA
RAM_Surface mounted 4' T5 linear fluorescent striplight 6 EA
Exit Light_Ceiling Mounted 2 EA
OS 20 EA
RX_EM_Ceiling recessed LED downlight 2 EA
RAM_EM_Surface mounted 4' T5 linear fluorescent striplight 2 EA
RM-1_EMNL_Ceiling recessed LED dropped lens 6" downlight 2 EA



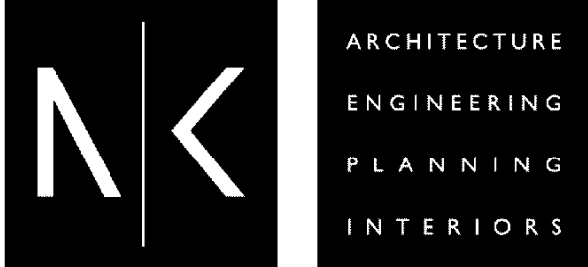
LIGHTING PLAN NOTES:

1. FOR GENERAL NOTES, SYMBOLS AND ABBREVIATION SEE DRAWING E-002.00
2. FOR LIGHTING NOTES SEE DRAWING E-003.00
3. FOR FIXTURE SCHEDULE, SEE DRAWING E-004.00
4. FOR PANEL SCHEDULES SEE E-100.00 SERIES DRAWINGS.
5. FOR LUTRON LIGHTING CONTROL WIRING DIAGRAM SEE DWG. E-206.00

Takeoff By : AB
Checked By : Nick
Date 02-05-2016

©2015 Robert Director Associates. All rights reserved.
This drawing and the designs contained herein are issued to provide technical information to the project team. This information is intended for use on this project only.
Reproduction of this drawing in any form or use of the images or information contained herein without the expressed written permission of Robert Director Associates is strictly prohibited.

ARCHITECTS



THE WOOLWORTH BUILDING
233 BROADWAY SUITE 2150, NEW YORK, NY 10279
t. 212.982.7900 f. 212.982.8111
95 WASHINGTON STREET, MORRISTOWN, NJ 07960
t. 973.539.5353 f. 973.539.0916
www.nkarchitects.com

ALLEN R. KOPELSON, AIA 012618-1
BEN P. LEE, AIA 015723-1
STEPHEN P. ALLOTTO, AIA 031972-1
PAUL J. DRAGO, AIA 022980-1
DANIEL J. TOPPING, AIA 035092-1
MARK C. von BRADSKY, PE 77543-1

THIS DOCUMENT IS THE EXCLUSIVE PROPERTY OF NADASKAY KOPELSON ARCHITECTS. THE DOCUMENT AND THE INFORMATION IT CONTAINS MAY NOT BE REPRODUCED OR USED FOR OTHER THAN THE SPECIFIC PROJECT FOR WHICH IT WAS PREPARED WITHOUT THE EXPLICIT CONSENT OF NADASKAY KOPELSON ARCHITECTS.

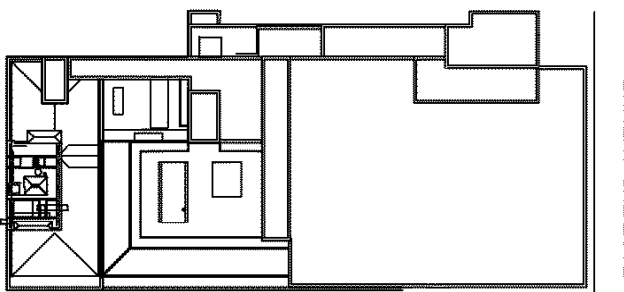
rda Robert Director Associates
Consulting Engineers

ROD • Telecommunications RDMC • Mission Critical
19 West 44th Street New York, NY 10036 212.764.7272
proj. engr. A. MANDATO proj. mgr. R. BROBSON

100% CD SUBMISSION

ISSUED FOR
CONSTRUCTION
PHASE 2
11/23/15

2	ADDENDUM #10	11/23/15
1	100% CD SUBMISSION	06/01/15
NO.	DESCRIPTION	DATE



NORTH
EAST 84TH STREET
BLOCK 23
LOT 10
ZONING: R5A, R62
ZONING MAP: R5A

PROJECT:



THE CHAPIN
SCHOOL

100 EAST END AVE. NEW YORK,
NY 10028

DRAWING TITLE

ELEVENTH FLOOR
LIGHTING PLAN
(PHASE TWO)

SEAL & SIGNATURE

DATE: 06-01-15

PROJECT No: 140801200

DRAWN BY: RST

CHK BY: AM

DWG No:

E-412.00

CADD FILE No:

TO THE BEST OF MY KNOWLEDGE, BELIEF AND PROFESSIONAL JUDGMENT, THESE PLANS AND SPECIFICATIONS ARE IN COMPLIANCE WITH THE NEW YORK CITY ENERGY CONSERVATION CODE

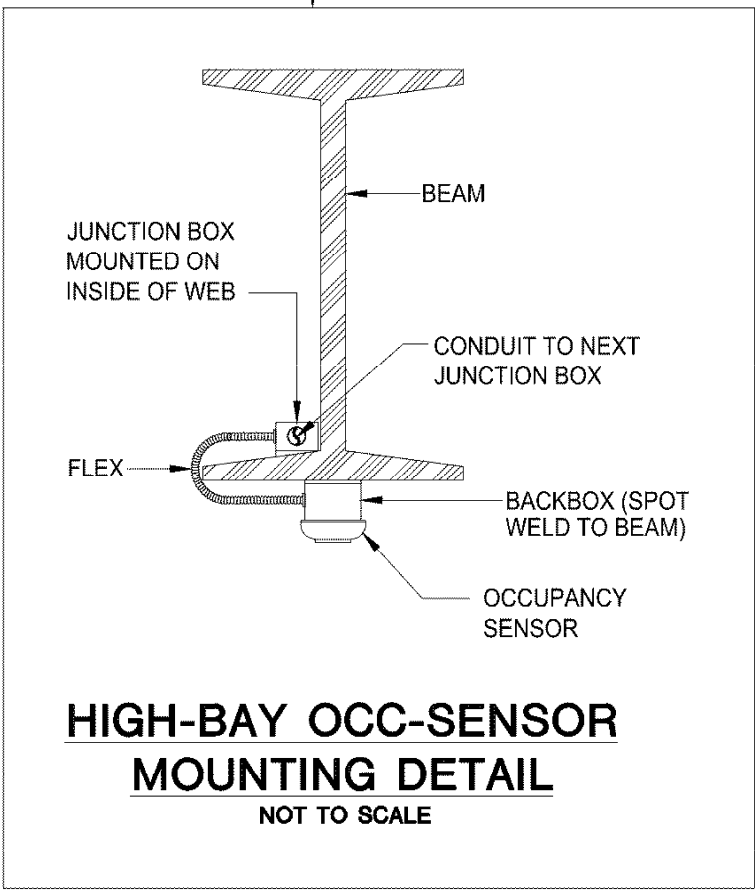
"THIS PLAN IS APPROVED ONLY FOR WORK INDICATED ON THE APPLICATION SPECIFICATION SHEET.
ALL OTHER MATTERS SHOWN ARE NOT TO BE RELIED UPON, OR TO BE CONSIDERED AS EITHER BEING APPROVED OR IN ACCORDANCE WITH APPLICABLE CODES."

BOOK SPECIFICATION
IS PART OF THIS CONTRACT

- RF_Pendant mounted dimmable LED direct/indirect lenses light 26 EA
RJ-1_Bracket mounted dimmable LED wall grazer at GYM Curtain 137 LF
RM-1_Ceiling recessed LED dropped lens 6" downlight 4 EA
RS-1_Pendant mounted fluorescent strip light T5HO 11 EA
RU_Unistrut/Pipe mounted theatrical accent DMX dimmable LED light 14 EA
RAM_Surface mounted 4' T5 linear fluorescent striplight 2 EA
Exit Light_Ceiling Mounted 2 EA
OS 13 EA
RX_EM_Ceiling recessed LED downlight 2 EA
RM-1_EMNML_Ceiling recessed LED dropped lens 6" downlight 2 EA
RS-1_EMNML_Pendant mounted fluorescent strip light T5HO 2 EA
RF_EM_Pendant mounted dimmable LED direct/indirect lenses light 28 EA

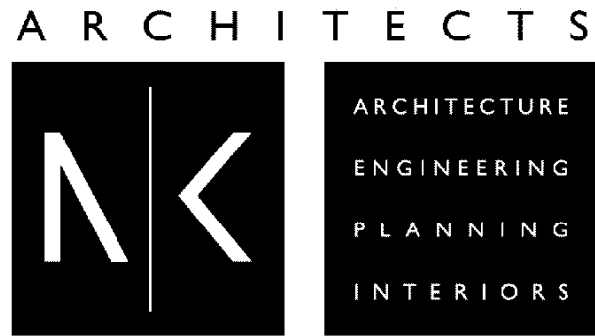


- LIGHTING PLAN NOTES:
1. FOR GENERAL NOTES, SYMBOLS AND ABBREVIATION SEE DRAWING E-002.00
 2. FOR LIGHTING NOTES SEE DRAWING E-003.00
 3. FOR FIXTURE SCHEDULE, SEE DRAWING E-004.00
 4. FOR PANEL SCHEDULES SEE E-100.00 SERIES DRAWINGS.
 5. FOR LUTRON WIRING CONTROL DIAGRAM SEE DWG. E-207.00



Takeoff By : AB
Checked By : Nick
Date 02-05-2016

©2015 Robert Detector Associates. All rights reserved.
This drawing and the designs contained herein are issued to provide technical information to the project team. This information is intended for use on this project only.
Reproduction of this drawing in any form or use of the images or information contained herein without the expressed written permission of Robert Detector Associates is strictly prohibited.



THE WOOLWORTH BUILDING
233 BROADWAY SUITE 2150, NEW YORK, NY 10279
t. 212.982.7900 f. 212.982.8111
95 WASHINGTON STREET, MORRISTOWN, NJ 07960
t. 973.539.5353 f. 973.539.0916
www.nkarchitects.com

ALLEN R. KOPELSON, AIA 012618-1
BEN P. LEE, AIA 015723-1
STEPHEN P. ALLIOTTO, AIA 031972-1
PAUL J. DRAGO, AIA 022980-1
DANIEL J. TOPPING, AIA 035092-1
MARK C. von BRADSKY, PE 77543-1

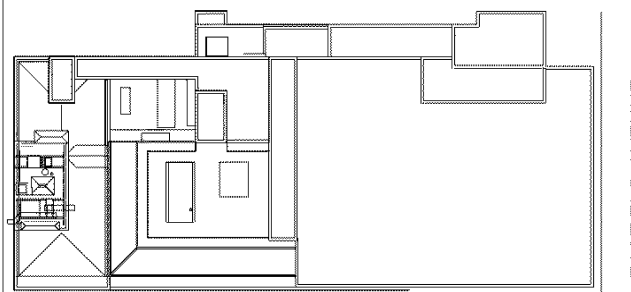
THIS DOCUMENT IS THE EXCLUSIVE PROPERTY OF NADASKAY KOPELSON ARCHITECTS. THE DOCUMENT AND THE INFORMATION IT CONTAINS MAY NOT BE REPRODUCED OR USED FOR OTHER THAN THE SPECIFIC PROJECT FOR WHICH IT WAS PREPARED WITHOUT THE EXPLICIT CONSENT OF NADASKAY KOPELSON ARCHITECTS.

rda Robert Detector Associates
Consulting Engineers
RDT • Telecommunications RDMC • Mission Critical
19 West 44th Street New York, NY 10036 212.764.7272
proj. engr. A. MANDATO proj. mgr. R. BROBSON

100% CD SUBMISSION

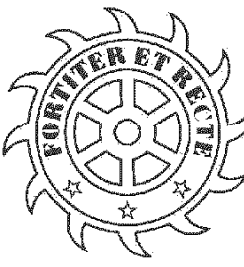
ISSUED FOR
CONSTRUCTION
PHASE 2
11/23/15

2	1	ADDENDUM #10	11/23/15
1		100% CD SUBMISSION	06/01/15
NO.		DESCRIPTION	DATE



NORTH
EAST 84TH STREET
BLOCK 580
LOT 23
ZONING R10A R60
ZONING MAP 054

PROJECT:



THE CHAPIN
SCHOOL

100 EAST END AVE. NEW YORK,
NY 10028

DRAWING TITLE

GYM- MEZZANINE
LIGHTING PLAN
(PHASE-TWO)

SEAL & SIGNATURE

DATE: 06-01-15

PROJECT No: 1408012.00

DRAWN BY: RST

CHK BY: AM

DWG No:

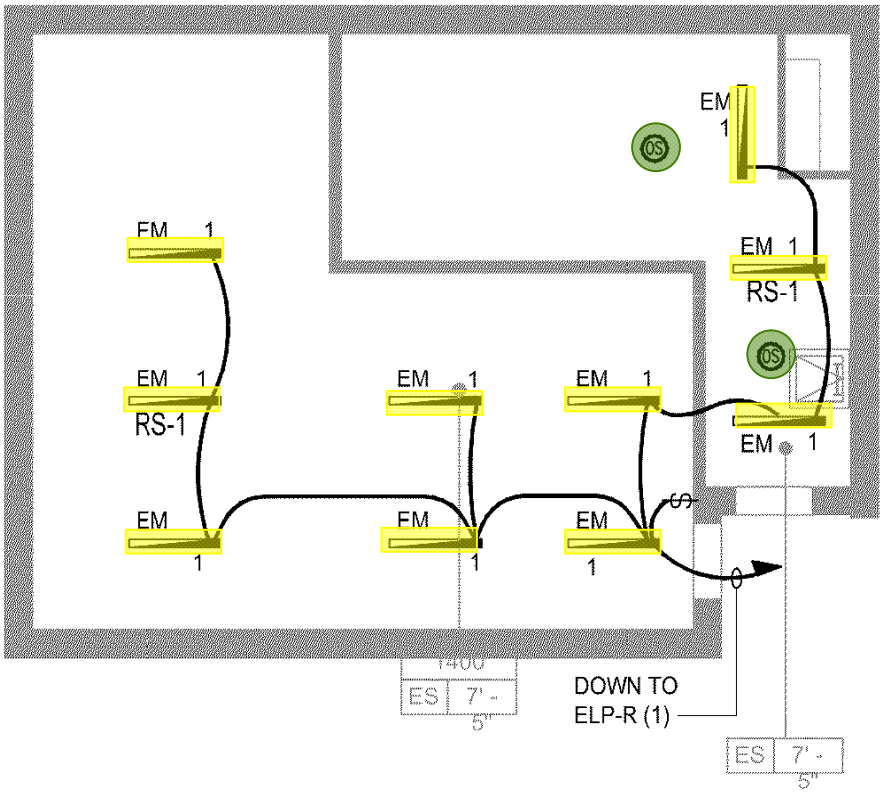
E-413.00

CADD FILE No:

TO THE BEST OF MY KNOWLEDGE, BELIEF AND PROFESSIONAL JUDGMENT, THESE PLANS AND SPECIFICATIONS ARE IN COMPLIANCE WITH THE NEW YORK CITY ENERGY CONSERVATION CODE

"THIS PLAN IS APPROVED ONLY FOR WORK INDICATED ON THE APPLICATION SPECIFICATION SHEET.
ALL OTHER MATTERS SHOWN ARE NOT TO BE RELIED UPON, OR TO BE CONSIDERED AS EITHER BEING APPROVED OR IN ACCORDANCE WITH APPLICABLE CODES."

BOOK SPECIFICATION
IS PART OF THIS CONTRACT



ELEVATOR MACHINE ROOM

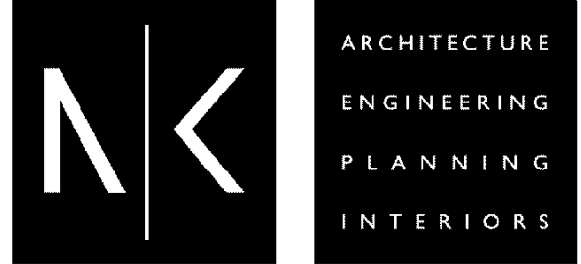
SCALE: 1/8" = 1'-0"

- LIGHTING PLAN NOTES:
1. FOR GENERAL NOTES, SYMBOLS AND ABBREVIATION SEE DRAWING E-002.00
 2. FOR LIGHTING NOTES SEE DRAWING E-003.00
 3. FOR FIXTURE SCHEDULE, SEE DRAWING E-004.00
 4. FOR PANEL SCHEDULES SEE E-100.00 SERIES DRAWINGS.
 5. FOR LIGHTING CONTROL DIAGRAM SEE DRAWINGS E-204.00
 6. ALL 120V, NORMAL LIGHTING CIRCUITS SHALL BE CONNECTED TO PANEL "LP-11M." ALL EMERGENCY LIGHTING CIRCUITS SHALL BE CONNECTED TO PANEL "ELP-R"

Takeoff By : AB
Checked By : Nick
Date 02-05-2016

©2015 Robert Derector Associates. All rights reserved.
This drawing and the designs contained herein are issued to provide technical information to the project team. This information is intended for use on this project only.
Reproduction of this drawing in any form or use of the images or information contained herein without the expressed written permission of Robert Derector Associates is strictly prohibited.

ARCHITECTS



THE WOOLWORTH BUILDING
233 BROADWAY SUITE 2150, NEW YORK, NY 10279
t. 212.982.7900 f. 212.982.8111
95 WASHINGTON STREET, MORRISTOWN, NJ 07960
t. 973.539.5353 f. 973.539.0916
www.nkarchitects.com

ALLEN R. KOPELSON, AIA 012618-1
BEN P. LEE, AIA 015723-1
STEPHEN P. ALUOTTO, AIA 031972-1
PAUL J. DRAGO, AIA 022960-1
DANIEL J. TOPPING, AIA 035002-1
MARK C. von BRADSKY, PE 77543-1

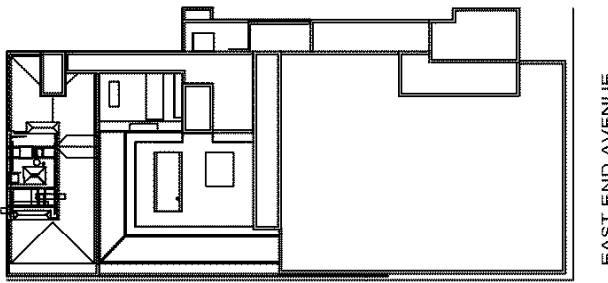
THIS DOCUMENT IS THE EXCLUSIVE PROPERTY OF NADASKAY KOPELSON ARCHITECTS. THE DOCUMENT AND THE INFORMATION IT CONTAINS MAY NOT BE REPRODUCED OR USED FOR OTHER THAN THE SPECIFIC PROJECT FOR WHICH IT WAS PREPARED WITHOUT THE EXPLICIT CONSENT OF NADASKAY KOPELSON ARCHITECTS.

rda Robert Derector Associates
Consulting Engineers
RDT • Telecommunications IDMC • Mission Critical
19 West 44th Street New York, NY 10036 212.764.7272
proj. engr. **A. MANDATO** Proj. mgr. **R. BROBSON**

100% CD SUBMISSION

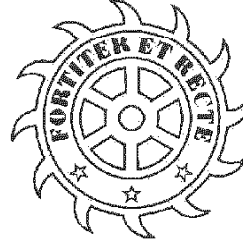
ISSUED FOR
CONSTRUCTION
PHASE 2
11/23/15

2	ADDENDUM #10	11/23/15
1	100% CD SUBMISSION	06/01/15
NO.	DESCRIPTION	DATE



NORTH
EAST 84TH STREET
BLOCK 25
LOT 25
ZONING R4A
ZONING MAP 65A

PROJECT:



THE CHAPIN
SCHOOL

100 EAST END AVE. NEW YORK,
NY 10028

DRAWING TITLE
**ROOF AND PENTHOUSE
LIGHTING PLAN
(PHASE-TWO)**

SEAL & SIGNATURE	DATE: 06-01-15
	PROJECT No: 140802.00
	DRAWN BY: RST
	CHK BY: AM
	DWG No: E-414.00
	CADD FILE No:

TO THE BEST OF MY KNOWLEDGE, BELIEF AND PROFESSIONAL JUDGMENT, THESE PLANS AND SPECIFICATIONS ARE IN COMPLIANCE WITH THE NEW YORK CITY ENERGY CONSERVATION CODE

"THIS PLAN IS APPROVED ONLY FOR WORK INDICATED ON THE APPLICATION SPECIFICATION SHEET. ALL OTHER MATTERS SHOWN ARE NOT TO BE RELIED UPON, OR TO BE CONSIDERED AS EITHER BEING APPROVED OR IN ACCORDANCE WITH APPLICABLE CODES."

BOOK SPECIFICATION
IS PART OF THIS CONTRACT