

1 1ST FLOOR PLAN  
SCALE: 1/8" = 1'-0"

12" Beam Bond - 8"H	77.9 SQ FT
8" Beam Bond - 8"H	317.6 SQ FT
8" Beam Bond - 8"H @ Window & Door Header	65.2 SQ FT
8" Beam Bond - 8"H @ Window Sill	33.7 SQ FT
12" Beam Bond - 8"H @ Window & Door Header	4.5 SQ FT
6" Beam Bond - 8" H @ Door Header	19.2 SQ FT

### CONSTRUCTION PLAN SYMBOLS

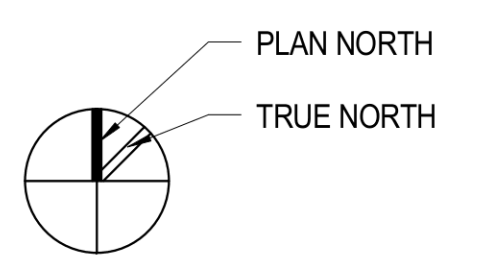
- EXISTING WALL
- NEW WALL
- 1-HR RATED FIRE PARTITION
- 1-HR RATED FIRE BARRIER
- COMPONENTS BY OWNER; NOT IN CONTRACT
- PARTITION TYPE

- ### FLOOR PLAN GENERAL NOTES
1. SEE SHEET CS-122 FOR INTERIOR PARTITION LEGEND.
  2. SEE SITE CIVIL AND LANDSCAPE PLANS FOR CONTINUATION OF WORK OUTSIDE OF BUILDING.
  3. ALL PARTITIONS ARE TYPE M8A.0 U.N.O. ON PLAN OR ENLARGED PLAN.
  4. ALL DIMENSIONS ARE TO FACE OF STUD OR FACE OF CMU, TYP. U.N.O.
  5. TURN MASONRY VENEER BACK TO CMU FACE AT JAMBS AT OPENINGS, TYP. U.N.O.
  6. FURNITURE AND VENDING MACHINES SHOWN ARE BY OWNER AND N.I.C.
  7. ALL DOOR HINGE-SIDE JAMBS TO BE 6" FROM FACE OF THE PERPENDICULAR WALL TO THE INSIDE FACE OF THE METAL JAMB, TYP. UNLESS DIMENSIONED OTHERWISE.
  8. PROVIDE VERTICAL CONTROL JOINTS IN GWB EVERY 30'-0". VERIFY LOCATIONS WITH ARCHITECT U.N.O.
  9. PROVIDE FIRE EXTINGUISHERS AND/OR FIRE EXTINGUISHER CABINETS AS INDICATED.
  10. ALL PENETRATIONS THROUGH ELEVATED FLOOR SLAB TO BE SEALED - REFER TO SPECIFICATIONS.
  11. FOR EXTERIOR RAMPS AND WALLS - SEE CIVIL DWGS.
  12. REFER TO DIMENSION PLANS AND ENLARGED PLANS FOR DIMENSIONING.
  13. ALL WALL INTERIOR UTILITIES ARE TO BE ROUTED (POWER, DATA, PLUMBING, FIRE PROTECTION, MECHANICAL) WITHIN STUD CAVITIES OR CMU CORES U.N.O.

- ### FLOOR PLAN SHEET NOTES
- 1 DRY VACUUM SYSTEM - SEE BID ALTERNATE G-5
  - 2 FOUNDATION DRAIN; REF WALL SECTIONS, CIVIL AND STRUCT DWGS
  - 3 LOCATION FOR "KNOX BOX" FIRE DEPARTMENT ACCESS KEY BOX AND ADA PUSHBUTTON - COORDINATE MOUNTING HEIGHTS WITH ARCHITECT
  - 4 STANDPIPE - REF FP DWGS
  - 5 CHAIN LINK FENCE
  - 6 WALKWAY COVER ABOVE - BID ALTERNATE G-2
  - 7 CELLS OF CMU BACKUP WALL TO BE FILLED WITH SPRAY FOAM INSULATION. AT RATED WALLS, SPRAY FOAM INSULATION TO BE APPROVED FOR USE IN RATED WALLS.

### DIMENSION LEGEND

- 7'-4" DIMENSIONED TO SURFACE & GRIDLINES
- 7'-4" DIMENSIONED TO CENTERLINE



**HOBBS ARCHITECTS, PA**  
Architects & Consultants  
159 West Salisbury Street  
PO Box 1457  
Pittsboro, North Carolina 27312  
Voice: (919) 545-2004  
Fax: (919) 545-9002

**HOBBS ARCHITECTS, PA**  
REGISTERED ARCHITECT  
NO. 10750  
PITTSBORO, NC

**HOBBS ARCHITECTS, PA**  
REGISTERED ARCHITECT  
NO. 51743  
PITTSBORO, NC

NEW PROJECT FOR  
**VET TECH BUILDING**  
CENTRAL CAROLINA COMMUNITY COLLEGE  
1105 KELLY DRIVE  
SANFORD, NC 27330

SCO ID  
#14-11296-02A  
NCCCS #2067

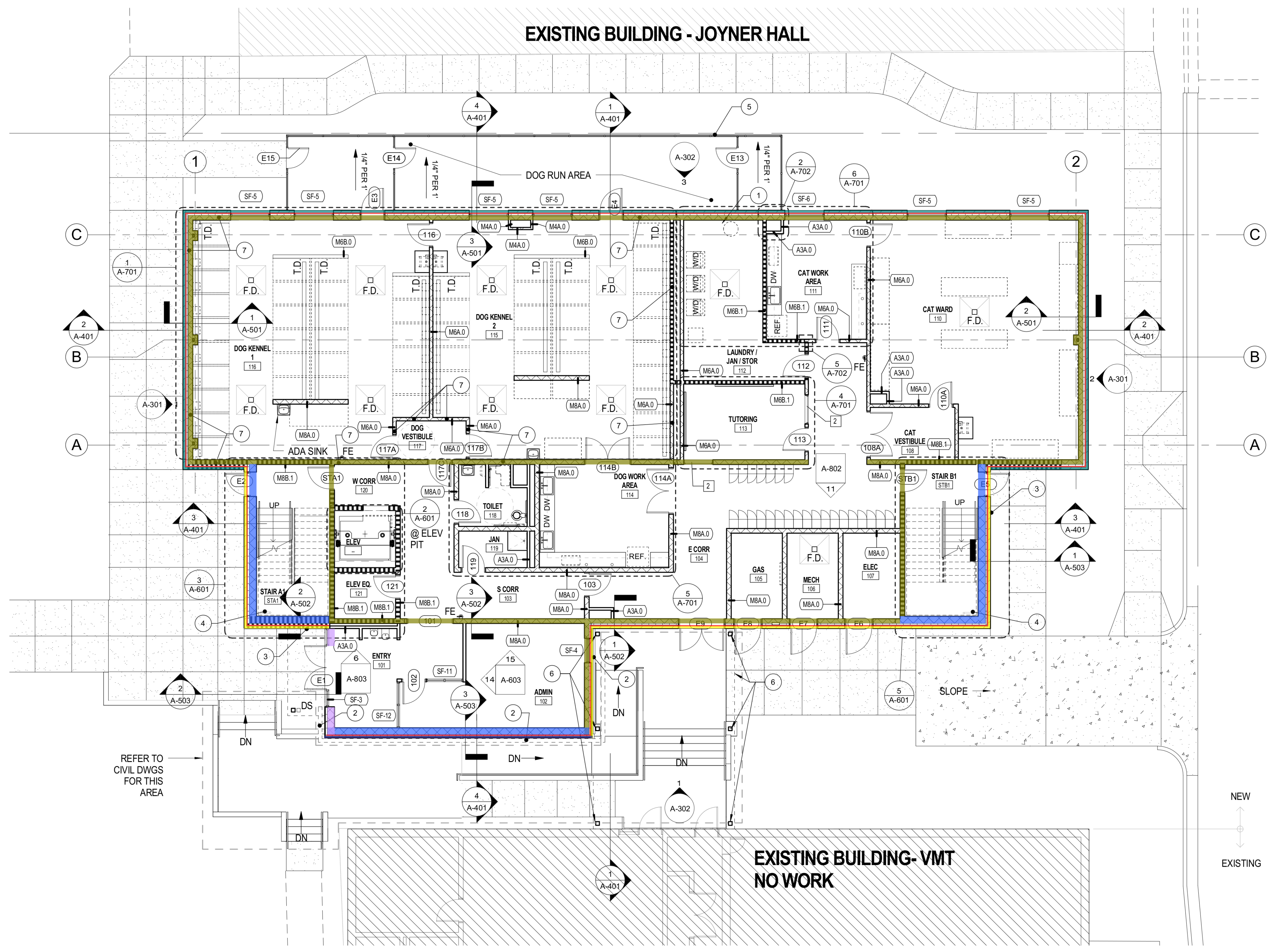
No.	Date

FIRST FLOOR PLAN

DATE  
10-21-2016

**A-101**





1 1ST FLOOR PLAN  
SCALE: 1/8" = 1'-0"

4" Single Brick at Foundation - 8" H	144.4 SQ FT
4" Single Brick at Foundation - 1'4" H	166.9 SQ FT
4" Single Brick at Foundation - 3'4" H	122.2 SQ FT
2" Grout 2'H	746.5 SQ FT
8" CMU - 2' H below grade filled with concrete	888.8 SQ FT
12" CMU - 2' H below grade filled with concrete	203.2 SQ FT
12" CMU - 1'4" H below grade	8.3 SQ FT

**CONSTRUCTION PLAN SYMBOLS**

- EXISTING WALL
- NEW WALL
- 1-HR RATED FIRE PARTITION
- 1-HR RATED FIRE BARRIER
- COMPONENTS BY OWNER; NOT IN CONTRACT
- PARTITION TYPE

**FLOOR PLAN GENERAL NOTES**

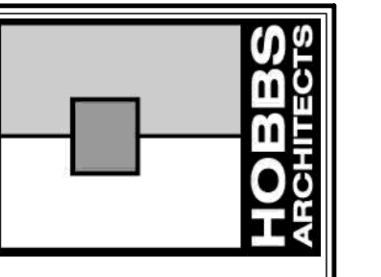
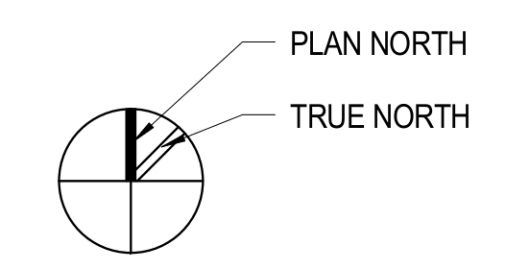
1. SEE SHEET CS-122 FOR INTERIOR PARTITION LEGEND.
2. SEE SITE CIVIL AND LANDSCAPE PLANS FOR CONTINUATION OF WORK OUTSIDE OF BUILDING.
3. ALL PARTITIONS ARE TYPE M8A.0 U.N.O. ON PLAN OR ENLARGED PLAN.
4. ALL DIMENSIONS ARE TO FACE OF STUD OR FACE OF CMU, TYP. U.N.O.
5. TURN MASONRY VENEER BACK TO CMU FACE AT JAMBS AT OPENINGS, TYP. U.N.O.
6. FURNITURE AND VENDING MACHINES SHOWN ARE BY OWNER AND N.I.C.
7. ALL DOOR HINGE-SIDE JAMBS TO BE 6" FROM FACE OF THE PERPENDICULAR WALL TO THE INSIDE FACE OF THE METAL JAMB, TYP. UNLESS DIMENSIONED OTHERWISE.
8. PROVIDE VERTICAL CONTROL JOINTS IN GWB EVERY 30'-0". VERIFY LOCATIONS WITH ARCHITECT U.N.O.
9. PROVIDE FIRE EXTINGUISHERS AND/OR FIRE EXTINGUISHER CABINETS AS INDICATED.
10. ALL PENETRATIONS THROUGH ELEVATED FLOOR SLAB TO BE SEALED - REFER TO SPECIFICATIONS.
11. FOR EXTERIOR RAMPS AND WALLS - SEE CIVIL DWGS.
12. REFER TO DIMENSION PLANS AND ENLARGED PLANS FOR DIMENSIONING.
13. ALL WALL INTERIOR UTILITIES ARE TO BE ROUTED (POWER, DATA, PLUMBING, FIRE PROTECTION, MECHANICAL) WITHIN STUD CAVITIES OR CMU CORES U.N.O.

**FLOOR PLAN SHEET NOTES**

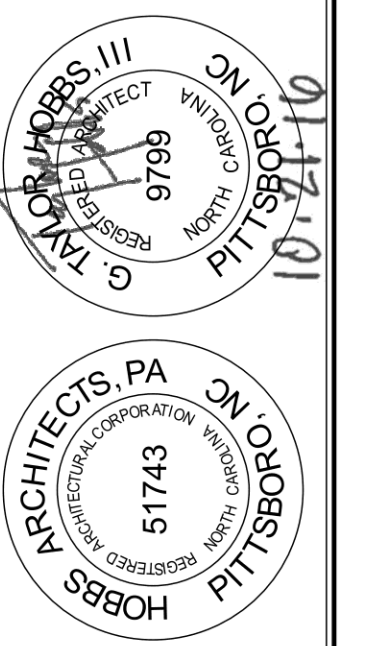
- 1 DRY VACUUM SYSTEM - SEE BID ALTERNATE G-5
- 2 FOUNDATION DRAIN; REF WALL SECTIONS, CIVIL AND STRUCT DWGS
- 3 LOCATION FOR "KNOX BOX" FIRE DEPARTMENT ACCESS KEY BOX AND ADA PUSHBUTTON - COORDINATE MOUNTING HEIGHTS WITH ARCHITECT
- 4 STANDPIPE - REF FP DWGS
- 5 CHAIN LINK FENCE
- 6 WALKWAY COVER ABOVE - BID ALTERNATE G-2
- 7 CELLS OF CMU BACKUP WALL TO BE FILLED WITH SPRAY FOAM INSULATION. AT RATED WALLS, SPRAY FOAM INSULATION TO BE APPROVED FOR USE IN RATED WALLS.

**DIMENSION LEGEND**

- 7'-4" DIMENSIONED TO SURFACE & GRIDLINES
- 7'-4" DIMENSIONED TO CENTERLINE



**HOBBS ARCHITECTS, PA**  
Architects & Consultants  
159 West Salisbury Street  
PO Box 1457  
Pittsboro, North Carolina 27312  
Voice: (919) 545-2004  
Fax: (919) 545-9002



NEW PROJECT FOR  
**VET TECH BUILDING**  
CENTRAL CAROLINA COMMUNITY COLLEGE  
1105 KELLY DRIVE  
SANFORD, NC 27330

SCO ID  
#14-11296-02A  
NCCCS #2067

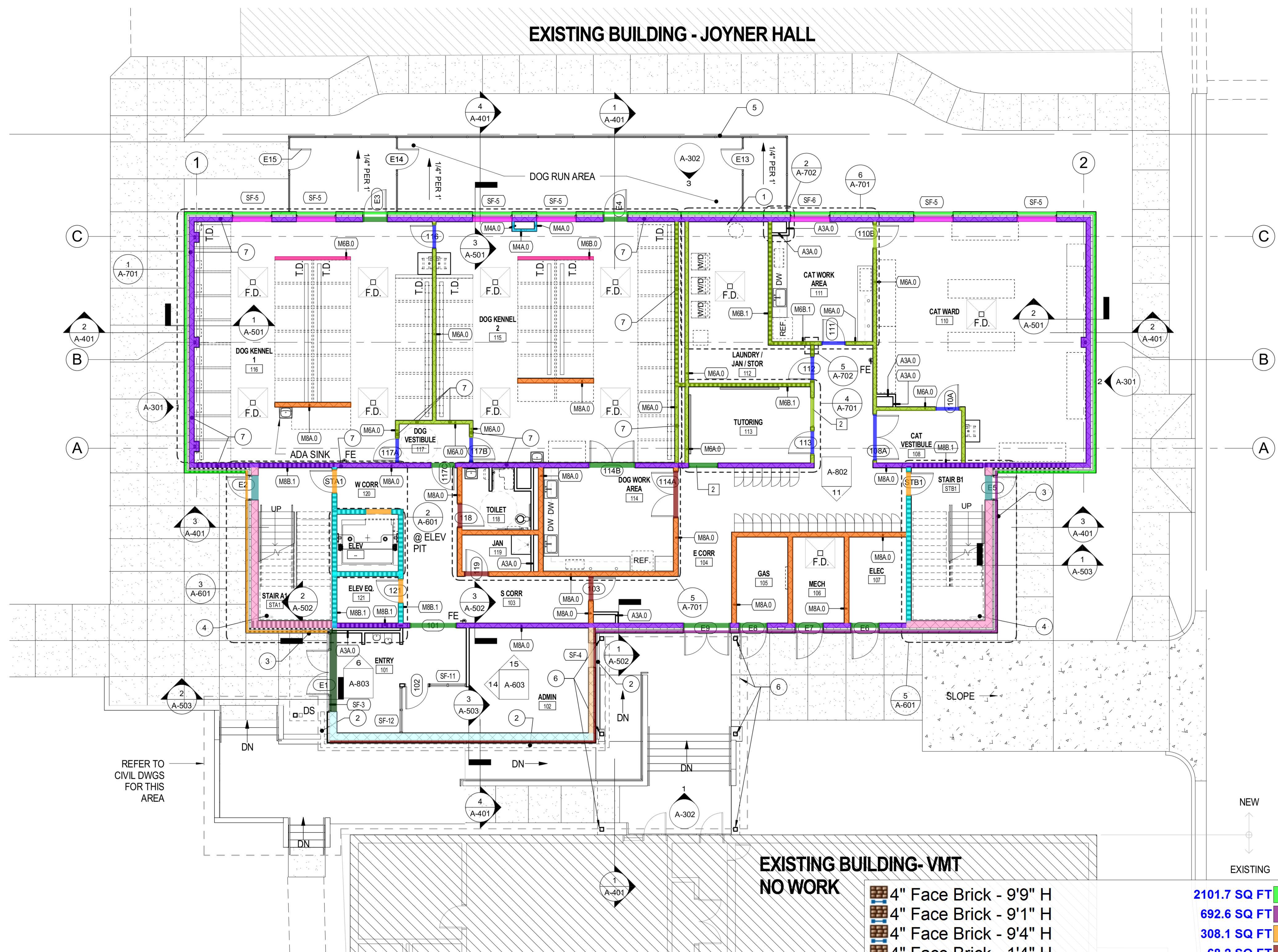
No.	Date

FIRST FLOOR PLAN

DATE  
10-21-2016

**A-101**





1 1ST FLOOR PLAN  
SCALE: 1/8" = 1'-0"

4" Face Brick - 9'9" H	2101.7 SQ FT
4" Face Brick - 9'1" H	692.6 SQ FT
4" Face Brick - 9'4" H	308.1 SQ FT
4" Face Brick - 1'4" H	68.2 SQ FT
8" CMU - 12'8" H	3875.6 SQ FT
8" CMU - 5'4" H	198.4 SQ FT
8" CMU - 5' H	219.3 SQ FT
4" CMU - 13'4" H	80.6 SQ FT
8" CMU - 13' H above Pit	828.2 SQ FT
8" CMU - 5'4" H	69.9 SQ FT
8" CMU - 15'4" H	233.6 SQ FT
12" CMU - 15'4" H	607.0 SQ FT
8" CMU - 5'8" H	92.5 SQ FT
12" CMU - 5'4" H	59.2 SQ FT
12" CMU - 12'8" H	752.1 SQ FT
12" CMU - 5' H	33.3 SQ FT
8" CMU - 13'4" H	2057.0 SQ FT
6" CMU - 1'4" H	27.6 SQ FT
6" CMU - 13'4" H	2692.7 SQ FT
6" CMU - 5'8" H	162.2 SQ FT

**CONSTRUCTION PLAN SYMBOLS**

- EXISTING WALL
- NEW WALL
- 1-HR RATED FIRE PARTITION
- 1-HR RATED FIRE BARRIER
- COMPONENTS BY OWNER; NOT IN CONTRACT
- PARTITION TYPE

**FLOOR PLAN GENERAL NOTES**

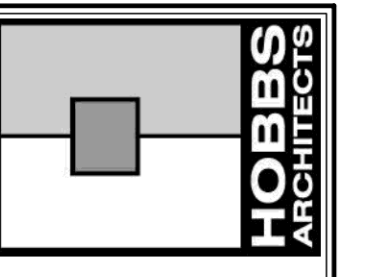
1. SEE SHEET CS-122 FOR INTERIOR PARTITION LEGEND.
2. SEE SITE CIVIL AND LANDSCAPE PLANS FOR CONTINUATION OF WORK OUTSIDE OF BUILDING.
3. ALL PARTITIONS ARE TYPE M8A.0 U.N.O. ON PLAN OR ENLARGED PLAN.
4. ALL DIMENSIONS ARE TO FACE OF STUD OR FACE OF CMU, TYP. U.N.O.
5. TURN MASONRY VENEER BACK TO CMU FACE AT JAMBS AT OPENINGS, TYP. U.N.O.
6. FURNITURE AND VENDING MACHINES SHOWN ARE BY OWNER AND N.I.C.
7. ALL DOOR HINGE-SIDE JAMBS TO BE 6" FROM FACE OF THE PERPENDICULAR WALL TO THE INSIDE FACE OF THE METAL JAMB, TYP. UNLESS DIMENSIONED OTHERWISE.
8. PROVIDE VERTICAL CONTROL JOINTS IN GWB EVERY 30'-0". VERIFY LOCATIONS WITH ARCHITECT U.N.O.
9. PROVIDE FIRE EXTINGUISHERS AND/OR FIRE EXTINGUISHER CABINETS AS INDICATED.
10. ALL PENETRATIONS THROUGH ELEVATED FLOOR SLAB TO BE SEALED - REFER TO SPECIFICATIONS.
11. FOR EXTERIOR RAMPS AND WALLS - SEE CIVIL DWGS.
12. REFER TO DIMENSION PLANS AND ENLARGED PLANS FOR DIMENSIONING.
13. ALL WALL INTERIOR UTILITIES ARE TO BE ROUTED (POWER, DATA, PLUMBING, FIRE PROTECTION, MECHANICAL) WITHIN STUD CAVITIES OR CMU CORES U.N.O.

**FLOOR PLAN SHEET NOTES**

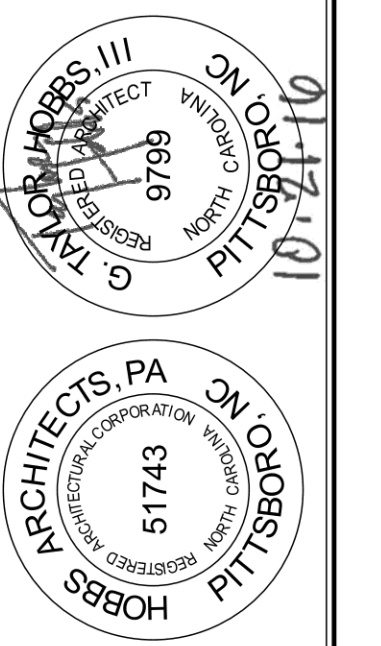
- 1 DRY VACUUM SYSTEM - SEE BID ALTERNATE G-5
- 2 FOUNDATION DRAIN; REF WALL SECTIONS, CIVIL AND STRUCT DWGS
- 3 LOCATION FOR "KNOX BOX" FIRE DEPARTMENT ACCESS KEY BOX AND ADA PUSHBUTTON - COORDINATE MOUNTING HEIGHTS WITH ARCHITECT
- 4 STANDPIPE - REF FP DWGS
- 5 CHAIN LINK FENCE
- 6 WALKWAY COVER ABOVE - BID ALTERNATE G-2
- 7 CELLS OF CMU BACKUP WALL TO BE FILLED WITH SPRAY FOAM INSULATION. AT RATED WALLS, SPRAY FOAM INSULATION TO BE APPROVED FOR USE IN RATED WALLS.

**DIMENSION LEGEND**

- 7'-4" DIMENSIONED TO SURFACE & GRIDLINES
- 7'-4" DIMENSIONED TO CENTERLINE



**HOBBS ARCHITECTS, PA**  
Architects & Consultants  
159 West Salisbury Street  
PO Box 1457  
Pittsboro, North Carolina 27312  
Voice: (919) 545-2004  
Fax: (919) 545-9002



NEW PROJECT FOR  
**VET TECH BUILDING**  
CENTRAL CAROLINA COMMUNITY COLLEGE  
1105 KELLY DRIVE  
SANFORD, NC 27330

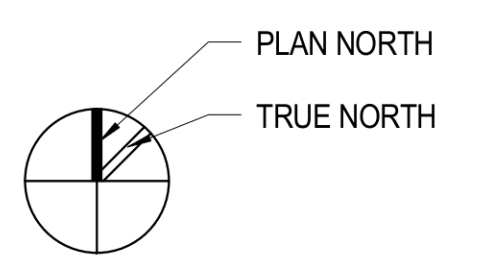
SCO ID  
#14-11296-02A  
NCCCS #2067

No.	Date

FIRST FLOOR PLAN

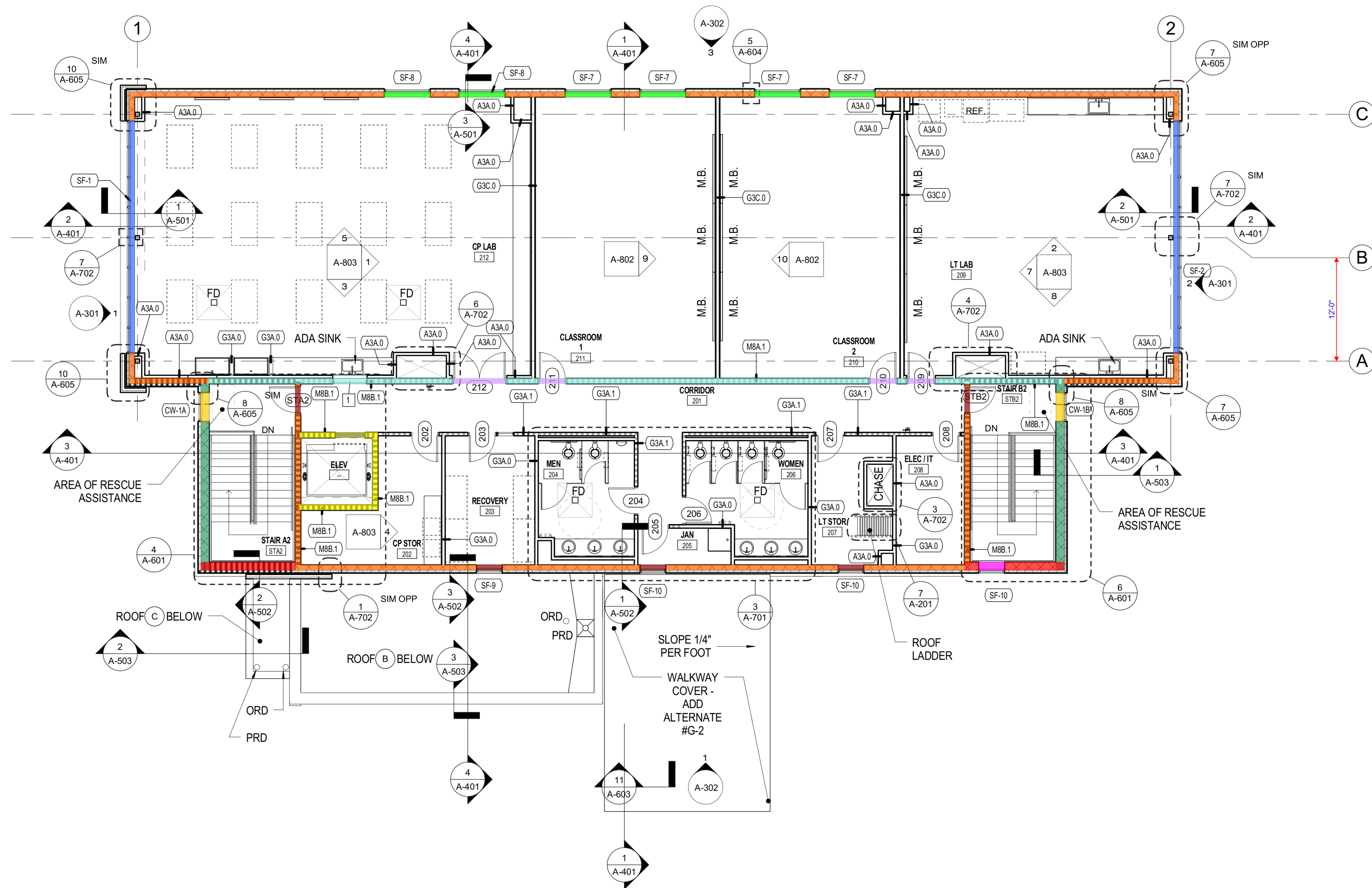
DATE  
10-21-2016

**A-101**





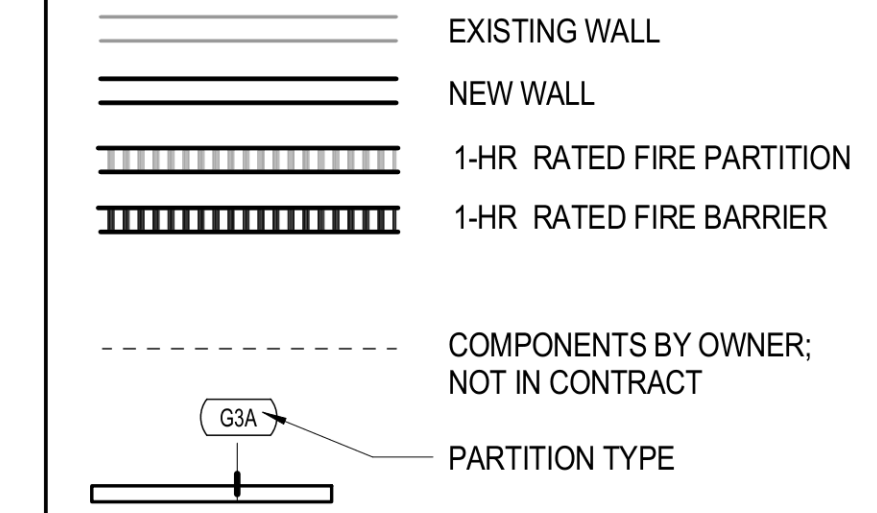
10/21/2016 5:07:48 PM



1 2ND FLOOR PLAN  
SCALE: 1/8" = 1'-0"

8" CMU - 2' H	107.9 SQ FT
8" CMU - 4'8" H	149.6 SQ FT
8" CMU - 4'8" H abv + 2'4" H blw	64.0 SQ FT
12" CMU - 4'8" H abv + 2'4" H blw	21.0 SQ FT
8" CMU - 13'4" H	3091.8 SQ FT
8" CMU - 5'8" H	35.3 SQ FT
8" CMU - 14' H	1173.9 SQ FT
8" CMU - 6'4" H	98.1 SQ FT
8" CMU - 13'8" H	323.0 SQ FT
8" CMU - 6'8" H	22.8 SQ FT
12" CMU - 13'4" H	260.4 SQ FT
12" CMU - 14' H	514.4 SQ FT
12" CMU - 2'8" H	18.2 SQ FT

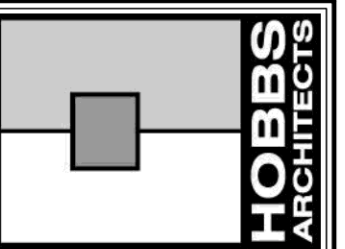
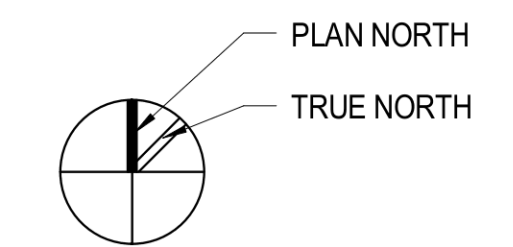
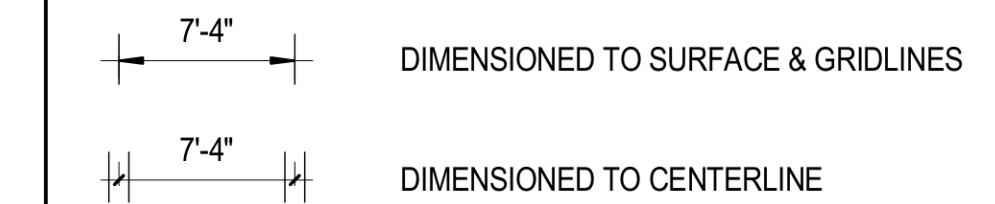
**CONSTRUCTION PLAN SYMBOLS**



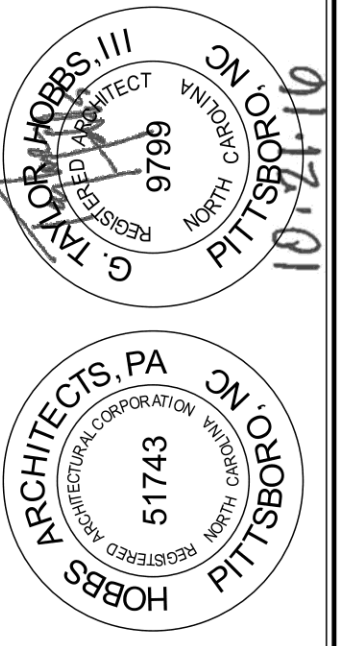
**FLOOR PLAN GENERAL NOTES**

- SEE SHEET CS-122 FOR INTERIOR PARTITION LEGEND.
- SEE SITE CIVIL AND LANDSCAPE PLANS FOR CONTINUATION OF WORK OUTSIDE OF BUILDING.
- ALL PARTITIONS ARE TYPE M8A.0 U.N.O. ON PLAN OR ENLARGED PLAN.
- ALL DIMENSIONS ARE TO FACE OF STUD OR FACE OF CMU, TYP, U.N.O.
- TURN MASONRY VENEER BACK TO CMU FACE AT JAMBS AT OPENINGS, TYP, U.N.O.
- FURNITURE AND VENDING MACHINES SHOWN ARE BY OWNER AND N.I.C.
- ALL DOOR HINGE-SIDE JAMBS TO BE 6" FROM FACE OF THE PERPENDICULAR WALL TO THE INSIDE FACE OF THE METAL JAMB, TYP, UNLESS DIMENSIONED OTHERWISE.
- PROVIDE VERTICAL CONTROL JOINTS IN GWB EVERY 30'-0". VERIFY LOCATIONS WITH ARCHITECT U.N.O.
- PROVIDE FIRE EXTINGUISHERS AND/OR FIRE EXTINGUISHER CABINETS AS INDICATED.
- ALL PENETRATIONS THROUGH ELEVATED FLOOR SLAB TO BE SEALED - REFER TO SPECIFICATIONS.
- FOR EXTERIOR RAMPS AND WALLS - SEE CIVIL DWGS.
- REFER TO DIMENSION PLANS AND ENLARGED PLANS FOR DIMENSIONING.
- ALL WALL INTERIOR UTILITIES ARE TO BE ROUTED (POWER, DATA, PLUMBING, FIRE PROTECTION, MECHANICAL) WITHIN STUD CAVITIES OR CMU CORES U.N.O.

**DIMENSION LEGEND**



**HOBBS ARCHITECTS, PA**  
Architects & Consultants  
159 West Salisbury Street  
PO Box 1457  
Pittsboro, North Carolina 27312  
Voice: (919) 545-2004  
Fax: (919) 545-9002



NEW PROJECT FOR  
**VET TECH BUILDING**  
CENTRAL CAROLINA COMMUNITY COLLEGE  
1105 KELLY DRIVE  
SANFORD, NC 27330

SCO ID  
#14-1296-02A  
NCCCS #2067

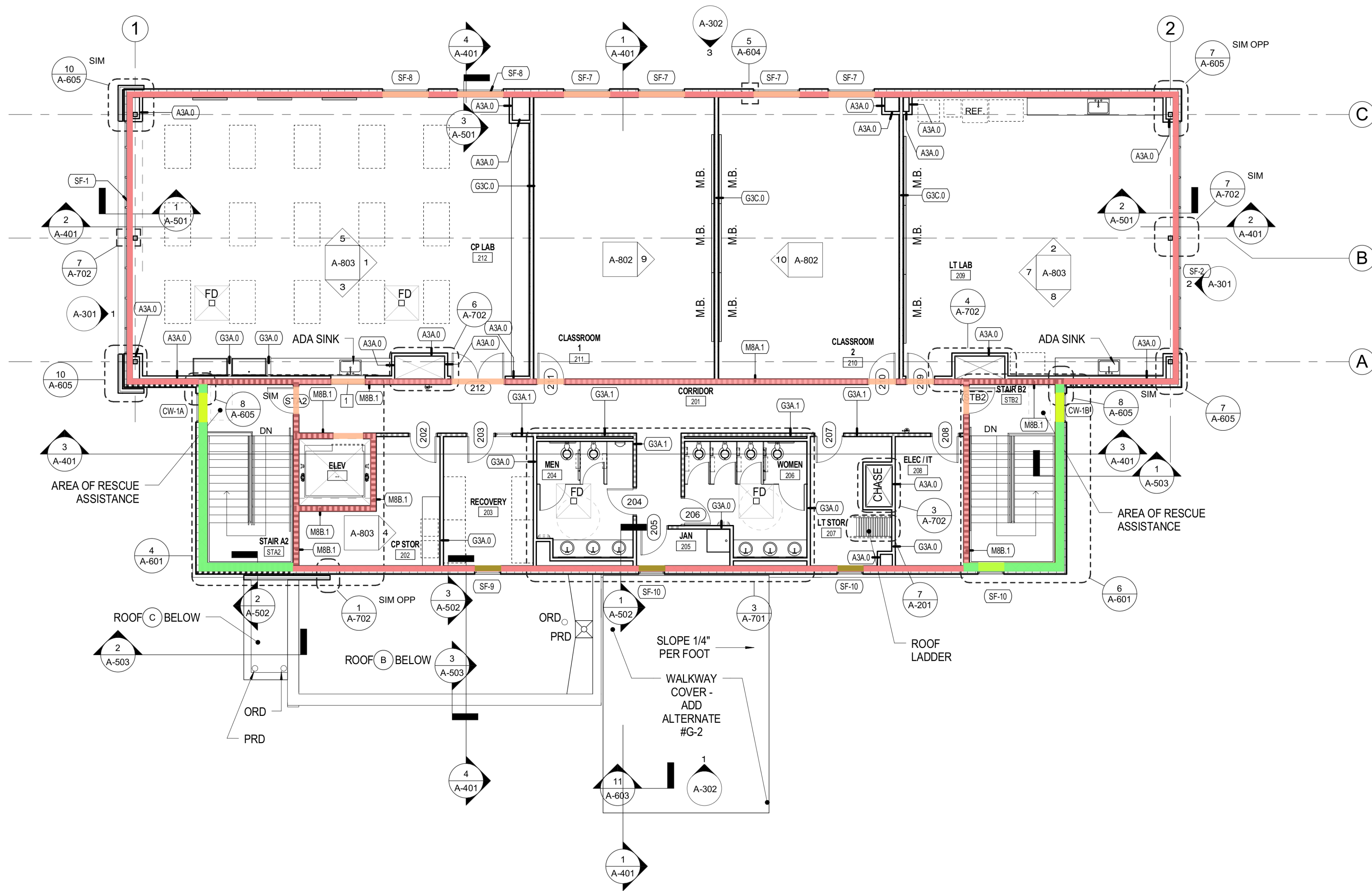
No.	Date

SECOND FLOOR PLAN

DATE  
10-21-2016

**A-102**





**1 2ND FLOOR PLAN**  
SCALE: 1/8" = 1'-0"

8" Beam Bond - 8"H	500.4 SQ FT
8" Beam Bond - 8"H @ Window Sill	6.1 SQ FT
12" Beam Bond - 8"H @ Window Sill	2.0 SQ FT
12" Beam Bond - 8"H @ Window & Door Header	6.6 SQ FT
8" Beam Bond - 8"H @ Window & Door Header	47.3 SQ FT
8" CMU - 8" H below parapet filled with concrete	193.6 SQ FT
12" CMU - 8" H below parapet filled with concrete	44.2 SQ FT
8" CMU - 2' H Parapet Wall	577.9 SQ FT
12" CMU - 2' H Parapet Wall	132.0 SQ FT
12" Beam Bond - 8"H	88.6 SQ FT

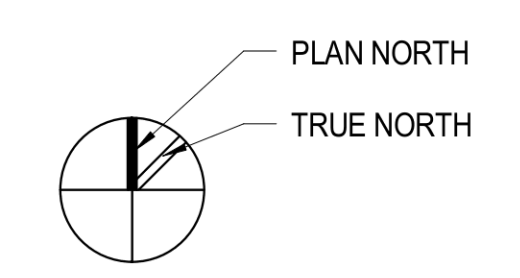
### CONSTRUCTION PLAN SYMBOLS

- EXISTING WALL
- NEW WALL
- 1-HR RATED FIRE PARTITION
- 1-HR RATED FIRE BARRIER
- COMPONENTS BY OWNER; NOT IN CONTRACT
- PARTITION TYPE

- ### FLOOR PLAN GENERAL NOTES
- SEE SHEET CS-122 FOR INTERIOR PARTITION LEGEND.
  - SEE SITE CIVIL AND LANDSCAPE PLANS FOR CONTINUATION OF WORK OUTSIDE OF BUILDING.
  - ALL PARTITIONS ARE TYPE M8A.0 U.N.O. ON PLAN OR ENLARGED PLAN.
  - ALL DIMENSIONS ARE TO FACE OF STUD OR FACE OF CMU, TYP. U.N.O.
  - TURN MASONRY VENEER BACK TO CMU FACE AT JAMBS AT OPENINGS. TYP. U.N.O.
  - FURNITURE AND VENDING MACHINES SHOWN ARE BY OWNER AND N.I.C.
  - ALL DOOR HINGE-SIDE JAMBS TO BE 6" FROM FACE OF THE PERPENDICULAR WALL TO THE INSIDE FACE OF THE METAL JAMB, TYP. UNLESS DIMENSIONED OTHERWISE.
  - PROVIDE VERTICAL CONTROL JOINTS IN GWB EVERY 30'-0". VERIFY LOCATIONS WITH ARCHITECT U.N.O.
  - PROVIDE FIRE EXTINGUISHERS AND/OR FIRE EXTINGUISHER CABINETS AS INDICATED.
  - ALL PENETRATIONS THROUGH ELEVATED FLOOR SLAB TO BE SEALED - REFER TO SPECIFICATIONS.
  - FOR EXTERIOR RAMPS AND WALLS - SEE CIVIL DWGS.
  - REFER TO DIMENSION PLANS AND ENLARGED PLANS FOR DIMENSIONING.
  - ALL WALL INTERIOR UTILITIES ARE TO BE ROUTED (POWER, DATA, PLUMBING, FIRE PROTECTION, MECHANICAL) WITHIN STUD CAVITIES OR CMU CORES U.N.O.

### DIMENSION LEGEND

- 7'-4" DIMENSIONED TO SURFACE & GRIDLINES
- 7'-4" DIMENSIONED TO CENTERLINE



**HOBBS ARCHITECTS, PA**  
Architects & Consultants  
159 West Salisbury Street  
PO Box 1457  
Pittsboro, North Carolina 27312  
Voice: (919) 545-2004  
Fax: (919) 545-9002

Professional Seal: G. Thomas Hobbs, III, Architect, No. 9799, State of North Carolina, expires 10/21/19.

Professional Seal: HOBBS ARCHITECTS, PA, No. 51743, State of North Carolina, expires 10/21/19.

NEW PROJECT FOR  
**VET TECH BUILDING**  
CENTRAL CAROLINA COMMUNITY COLLEGE  
1105 KELLY DRIVE  
SANFORD, NC 27330

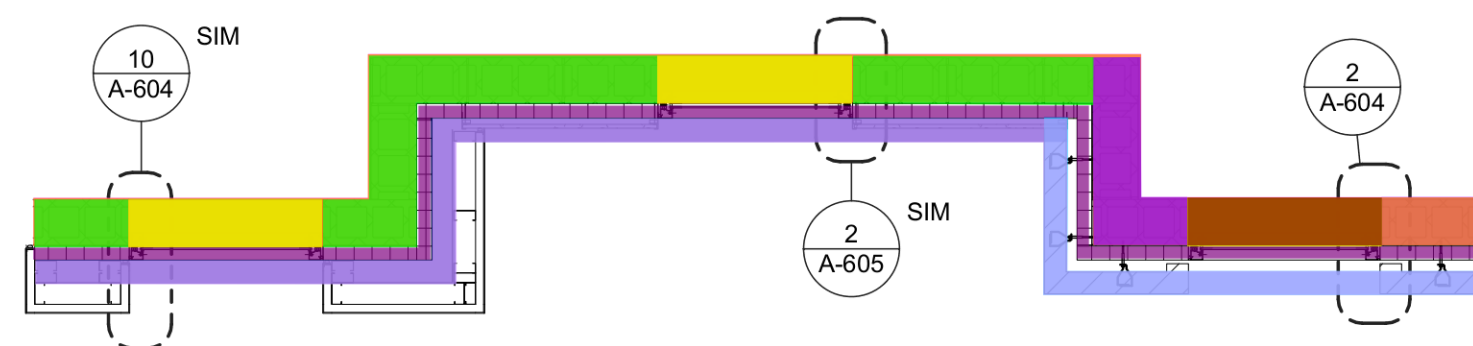
SCO ID #14-1296-02A  
NCCCS #2067

No.	Date

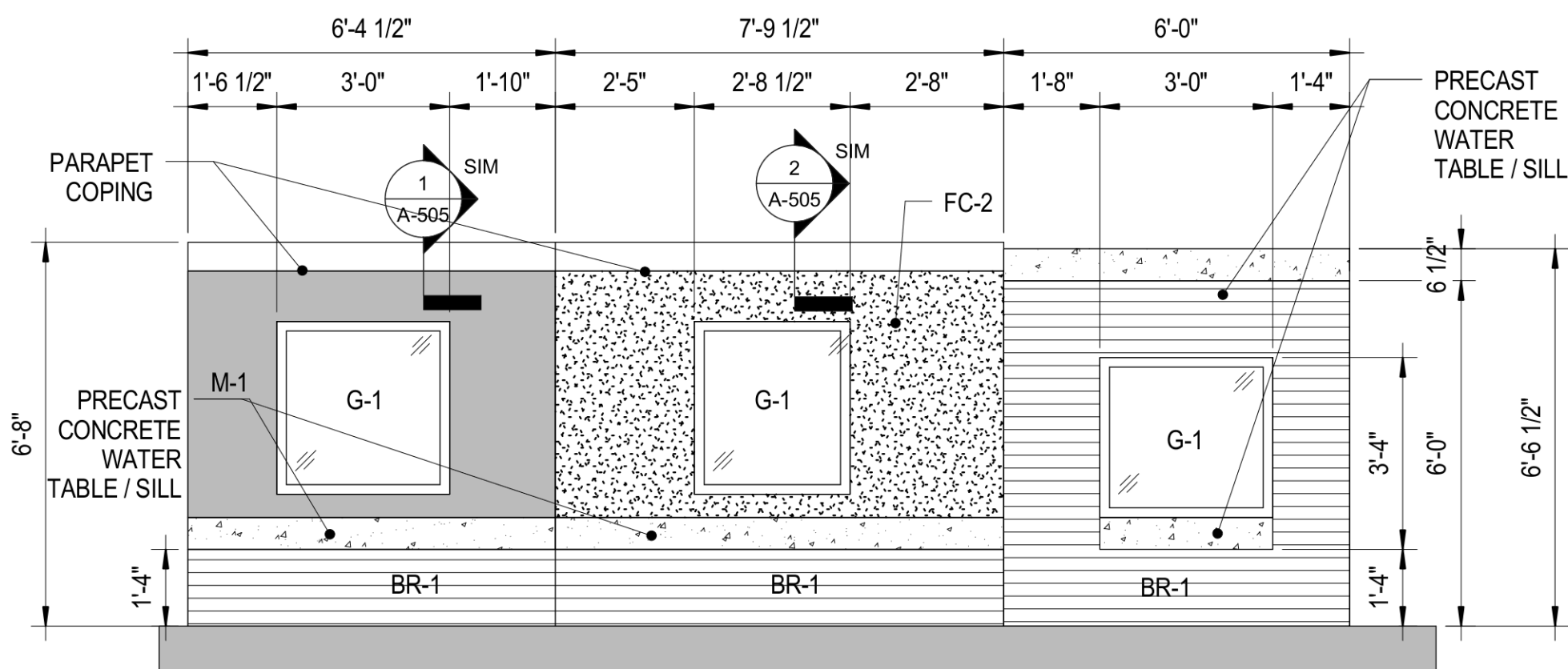
SECOND FLOOR PLAN

DATE 10-21-2016  
**A-102**





PLAN

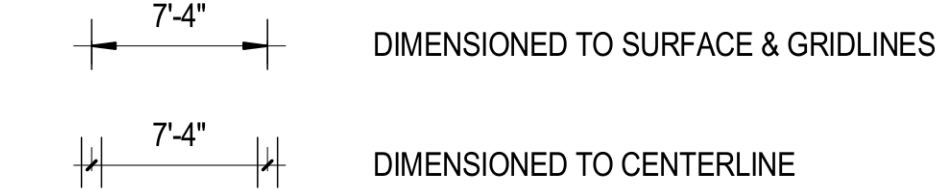


ELEVATION

5 MOCKUP  
SCALE: 3/8" = 1'-0"

4" Face Brick - 2'4" H	38.1 SQ FT
8" CMU - 2' H below grade filled with concrete	48.1 SQ FT
8" CMU - 5'11" H	31.0 SQ FT
8" CMU - 1'8" H @ Window	9.0 SQ FT
8" CMU - 1'3" H @ Window	3.4 SQ FT
8" Beam Bond - 8" H @ Window Sill	5.4 SQ FT
8" Beam Bond - 8" H @ Window Header	5.4 SQ FT
8" CMU - 6" H	67.8 SQ FT
8" Beam Bond - 8" H	16.1 SQ FT
4" Face Brick - 7' H	55.0 SQ FT
4" single Face Brick - 1' H @ Foundation	241.2 SQ FT
2" Grout - 2' H	48.0 SQ FT

**DIMENSION LEGEND**



**GLAZING TYPES**

- G-1 1" INSULATED GLAZING UNIT - VISION
- G-1T 1" INSULATED GLAZING UNIT - VISION - TEMPERED
- G-2 1/4" MONOLITHIC GLAZING UNIT - VISION
- G-2T 1/4" MONOLITHIC GLAZING UNIT - VISION - TEMPERED
- G-3 1/4" TEMPERED 20 MIN. FIRE PROTECTION RATED GLAZING. REFER TO SPECIFICATIONS.
- G-4 3/4" TEMPERED 45 MIN. FIRE PROTECTION RATED GLAZING. REFER TO SPECIFICATIONS.
- G-5 7/8" TEMPERED 60 MIN. FIRE RESISTANT RATED GLAZING. REFER TO SPECIFICATIONS.

**EXTERIOR MATERIALS**

- M-1 ALUMINUM COMPOSITE MATERIAL PANEL
- M-2 CORRUGATED METAL PANEL
- FC-1 FIBER CEMENT SIDING, PAINTED COLOR 1 "TAN"
- FC-2 FIBER CEMENT SIDING, PAINTED COLOR 2 "GREY"
- BR-1 BRICK VENEER

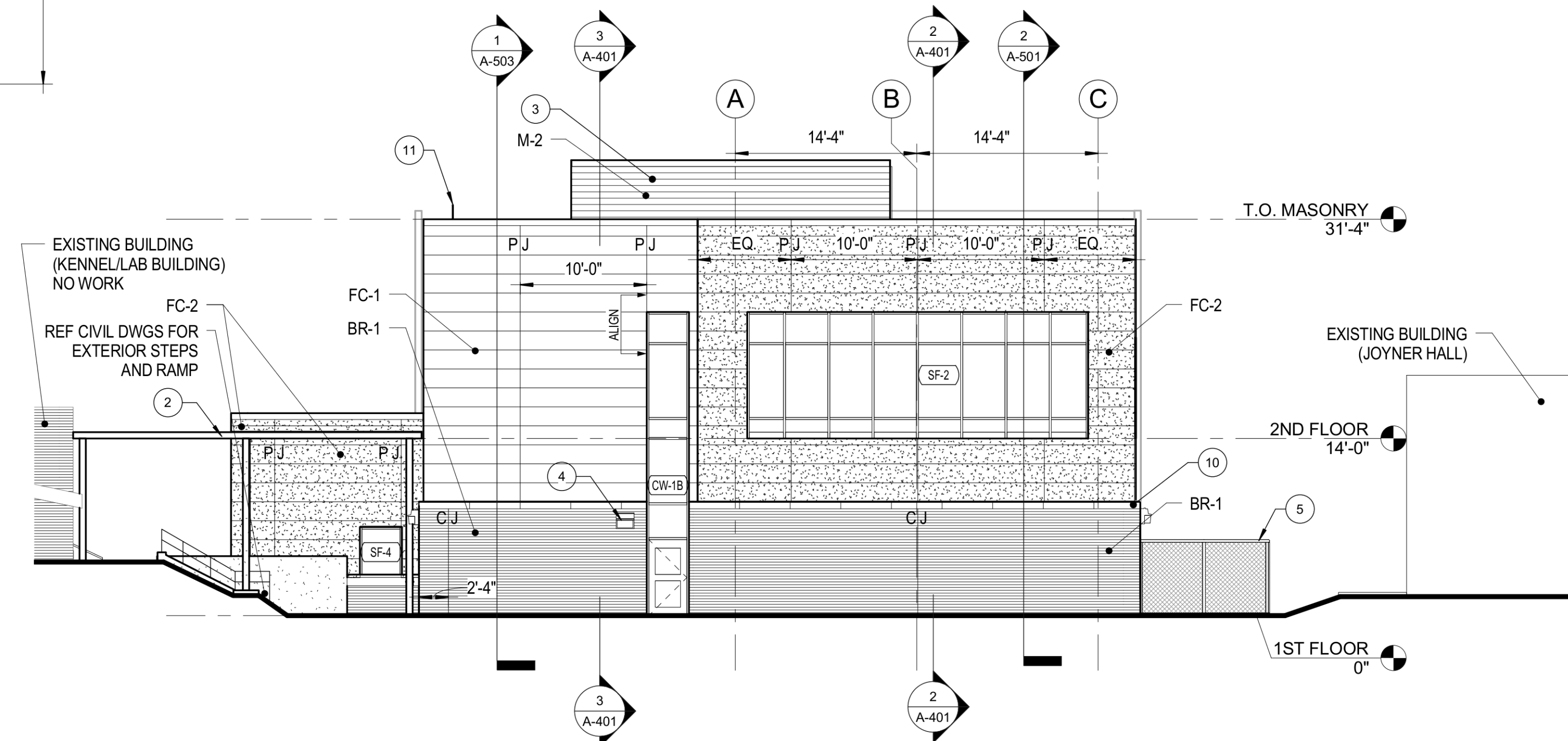
REFER TO SPECIFICATIONS

**ELEVATION GENERAL NOTES**

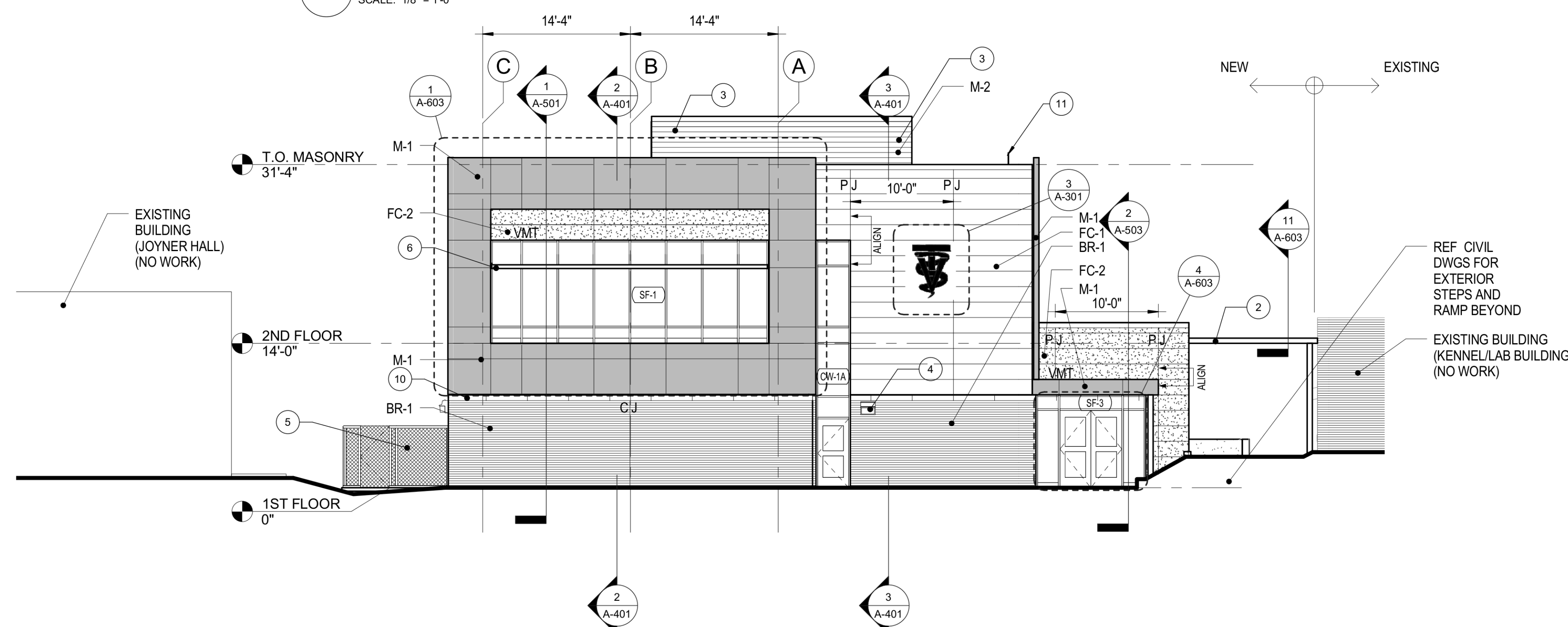
1. JOINTS ARE TO BE AS INDICATED IN ELEVATIONS ON SHEETS A-301 AND A-302.
2. REFER TO WALL SECTIONS FOR DETAILED ASSEMBLIES.
3. ALL EXTERIOR EXPOSED STEEL TO BE PAINTED. SEE SPECIFICATIONS IN PROJECT MANUAL.
4. A FULL SCALE WALL MOCK-UP WILL BE REQUIRED AT LOCATIONS INDICATED ON ELEVATIONS.
5. REFER TO ENGINEERING DRAWINGS FOR LOCATIONS OF EXTERIOR WALL MOUNTED LIGHTS, OUTLETS, HOSE BIBBS, AND OTHERS.
6. PJ = PANEL JOINT IN FIBER CEMENT/ACM; CJ = CONTROL JOINT IN MASONRY

**ELEVATION SHEET NOTES**

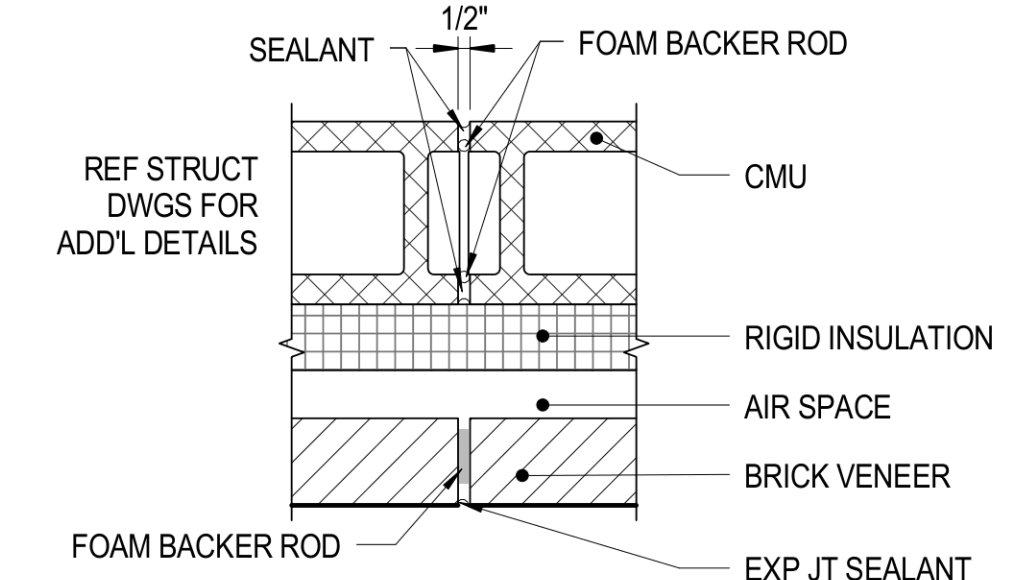
- 1 FUTURE SIGNAGE / LIGHTING LOCATION - REF ELEC DWGS
- 2 ALTERNATE #G-2 - REF SPECS
- 3 ALTERNATE #G-3 - REF SPECS (ROOF EQUIPMENT SCREEN)
- 4 EXTERIOR LIGHTING - REF ELEC DWGS
- 5 CHAINLINK FENCING
- 6 INTEGRATED METAL SUNSHADE
- 7 ROOFTOP MECHANICAL UNITS
- 8 OVERFLOW DRAIN OUTLET
- 9 LOUVER
- 10 PRECAST CONCRETE WATER TABLE
- 11 GUARDRAIL



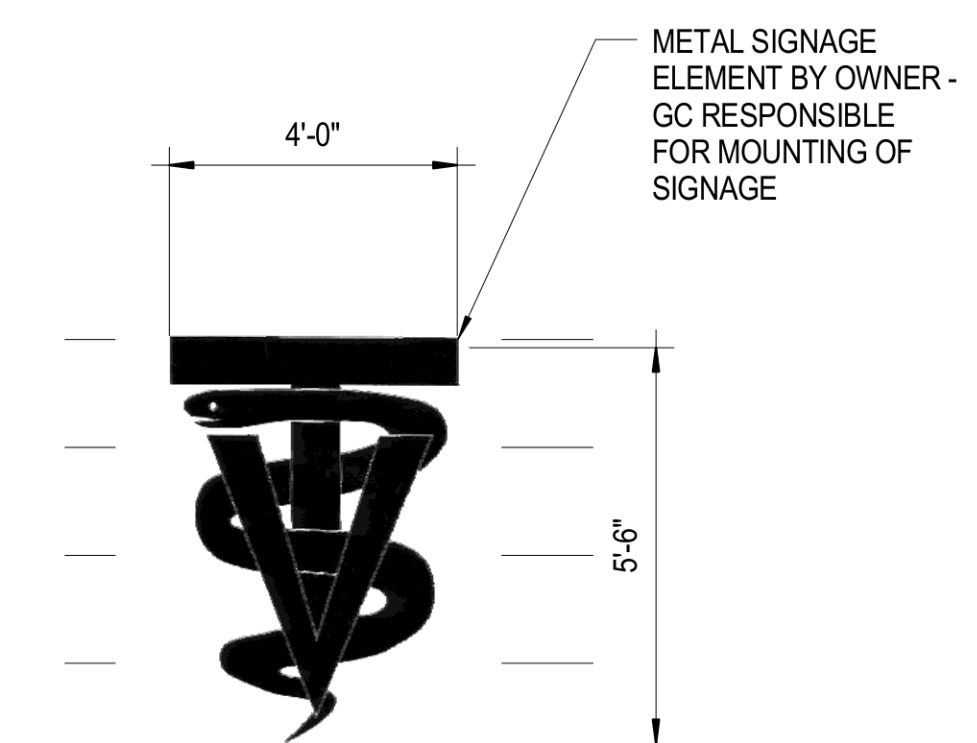
2 EAST ELEVATION  
SCALE: 1/8" = 1'-0"



1 WEST ELEVATION  
SCALE: 1/8" = 1'-0"

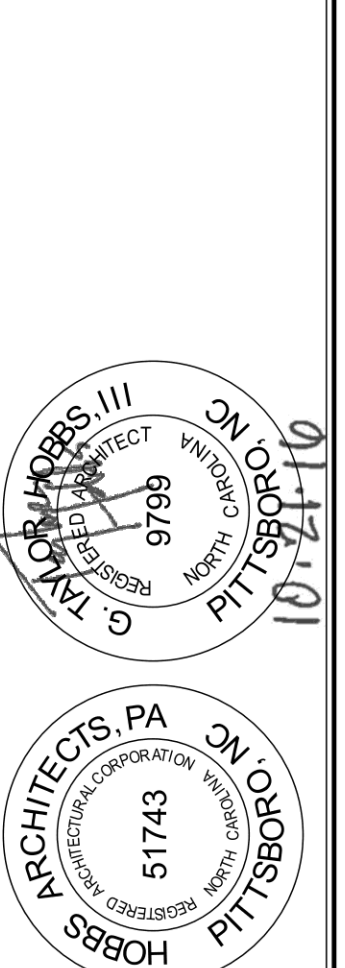


4 TYPICAL MASONRY (CMU & BRICK) EXP JT.  
SCALE: 1 1/2" = 1'-0"



3 ENLARGED ELEVATION - VET TECH SIGN  
SCALE: 3/8" = 1'-0"

**HOBBS ARCHITECTS, P.A.**  
Architects & Consultants  
159 West Salisbury Street  
PO Box 1457  
Pittsboro, North Carolina 27312  
Voice: (919) 545-2004  
Fax: (919) 545-9002



NEW PROJECT FOR  
**VET TECH BUILDING**  
CENTRAL CAROLINA COMMUNITY COLLEGE  
1105 KELLY DRIVE  
SANFORD, NC 27330

SCO ID  
#14-1296-02A  
NCCCS #2067

No.	Date

EXTERIOR BUILDING ELEVATIONS

DATE  
10-21-2016

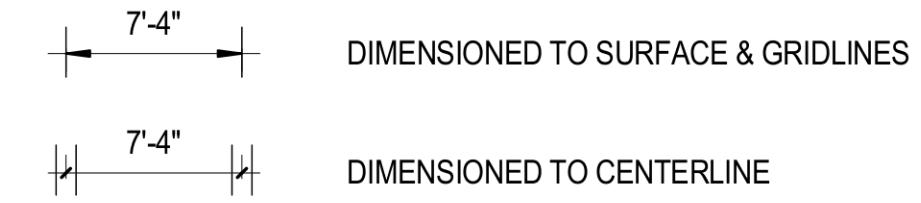
**A-301**







**DIMENSION LEGEND**



**GLAZING TYPES**

- G-1 1" INSULATED GLAZING UNIT - VISION
- G-1T 1" INSULATED GLAZING UNIT - VISION - TEMPERED
- G-2 1/4" MONOLITHIC GLAZING UNIT - VISION
- G-2T 1/4" MONOLITHIC GLAZING UNIT - VISION - TEMPERED
- G-3 1/4" TEMPERED 20 MIN. FIRE PROTECTION RATED GLAZING. REFER TO SPECIFICATIONS.
- G-4 3/4" TEMPERED 45 MIN. FIRE PROTECTION RATED GLAZING. REFER TO SPECIFICATIONS.
- G-5 7/8" TEMPERED 60 MIN. FIRE RESISTANT RATED GLAZING. REFER TO SPECIFICATIONS.

**EXTERIOR MATERIALS**

- M-1 ALUMINUM COMPOSITE MATERIAL PANEL
- M-2 CORRUGATED METAL PANEL
- FC-1 FIBER CEMENT SIDING, PAINTED COLOR 1 "TAN"
- FC-2 FIBER CEMENT SIDING, PAINTED COLOR 2 "GREY"
- BR-1 BRICK VENEER

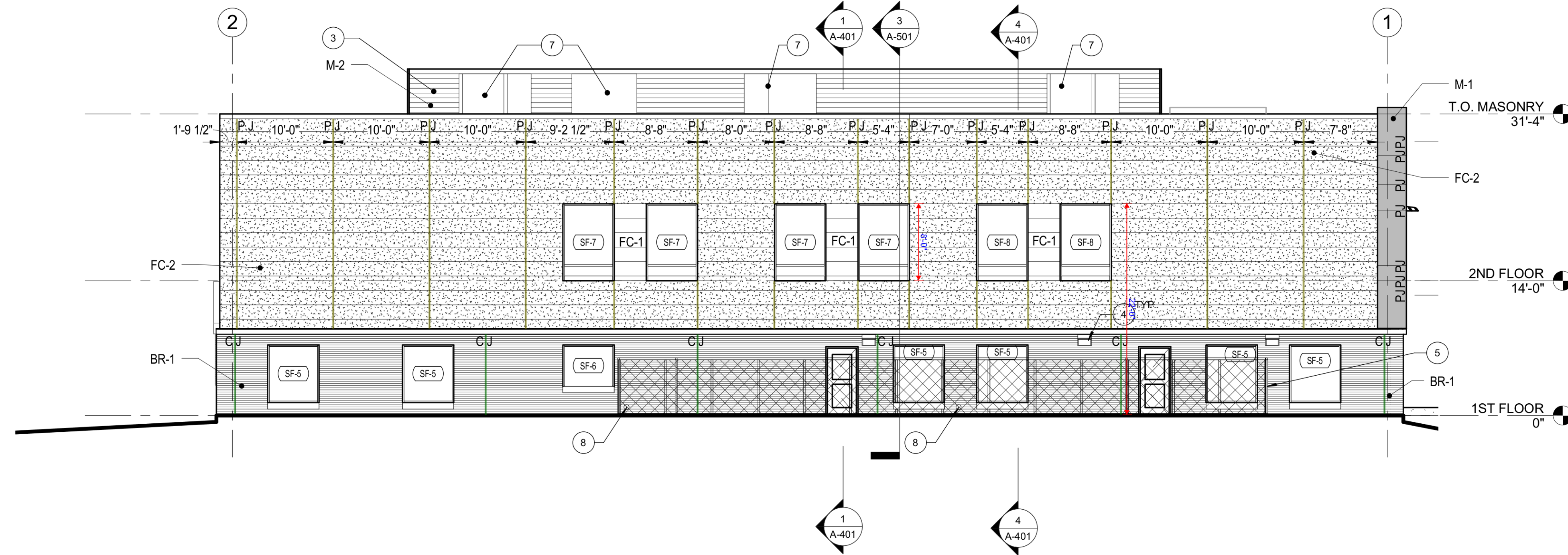
REFER TO SPECIFICATIONS

**ELEVATION GENERAL NOTES**

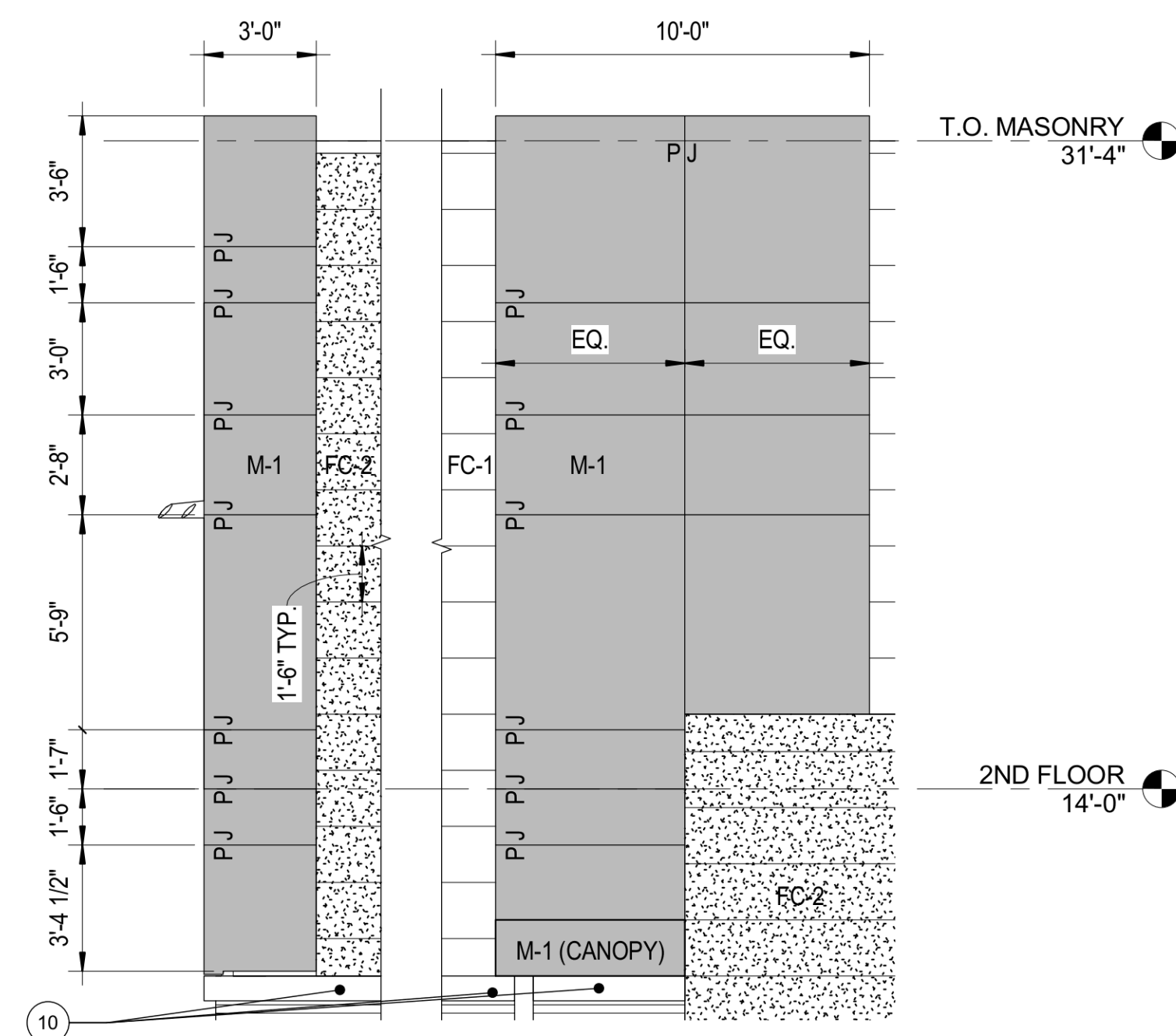
1. JOINTS ARE TO BE AS INDICATED IN ELEVATIONS ON SHEETS A-301 AND A-302.
2. REFER TO WALL SECTIONS FOR DETAILED ASSEMBLIES.
3. ALL EXTERIOR EXPOSED STEEL TO BE PAINTED. SEE SPECIFICATIONS IN PROJECT MANUAL.
4. A FULL SCALE WALL MOCK-UP WILL BE REQUIRED AT LOCATIONS INDICATED ON ELEVATIONS.
5. REFER TO ENGINEERING DRAWINGS FOR LOCATIONS OF EXTERIOR WALL MOUNTED LIGHTS, OUTLETS, HOSE BIBBS, AND OTHERS.
6. PJ = PANEL JOINT IN FIBER CEMENT/ACM; CJ = CONTROL JOINT IN MASONRY

**ELEVATION SHEET NOTES**

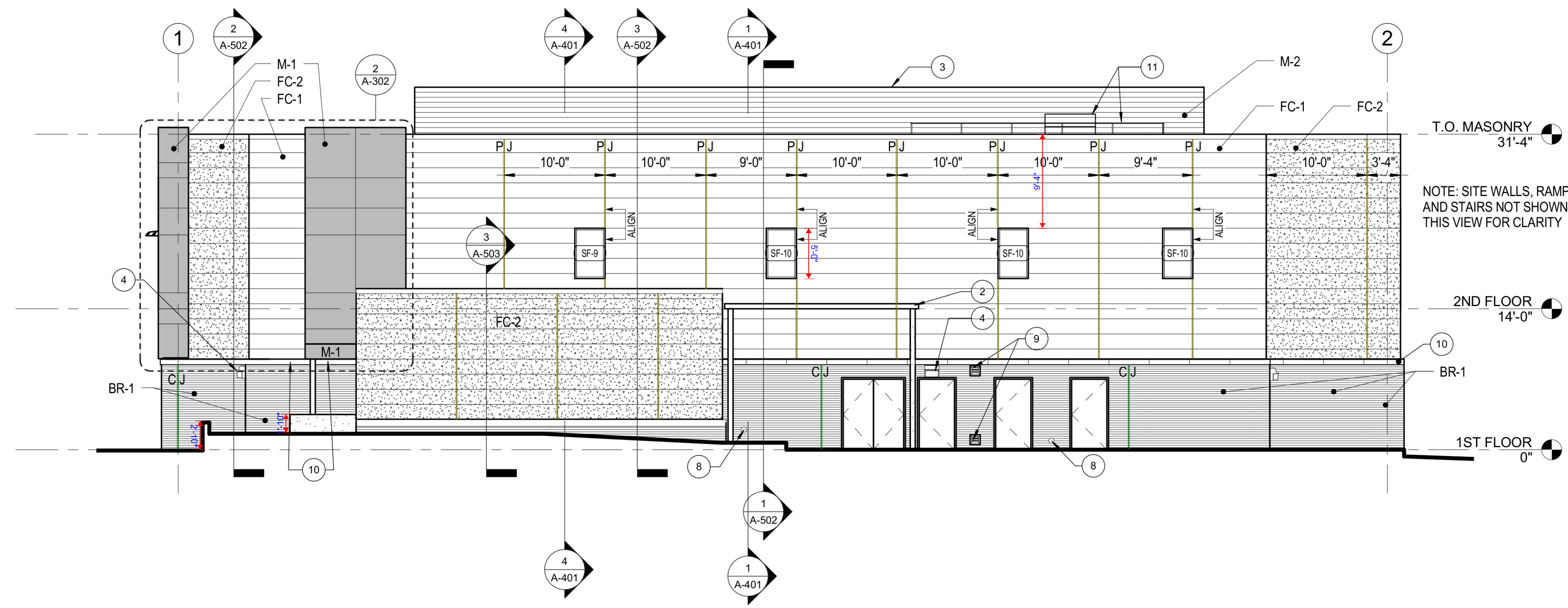
- 1 FUTURE SIGNAGE / LIGHTING LOCATION - REF ELEC DWGS
- 2 ALTERNATE #G-2 - REF SPECS
- 3 ALTERNATE #G-3 - REF SPECS (ROOF EQUIPMENT SCREEN)
- 4 EXTERIOR LIGHTING - REF ELEC DWGS
- 5 CHAINLINK FENCING
- 6 INTEGRATED METAL SUNSHADE
- 7 ROOFTOP MECHANICAL UNITS
- 8 OVERFLOW DRAIN OUTLET
- 9 LOUVER
- 10 PRECAST CONCRETE WATER TABLE
- 11 GUARDRAIL



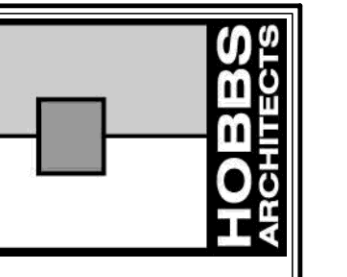
**3 NORTH ELEVATION**  
SCALE: 1/8" = 1'-0"



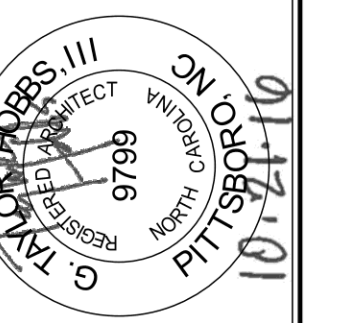
**2 ENLARGED ELEVATION - SOUTH ACM**  
SCALE: 1/4" = 1'-0"



**1 SOUTH ELEVATION**  
SCALE: 1/8" = 1'-0"



**HOBBS ARCHITECTS, PA**  
Architects & Consultants  
159 West Salisbury Street  
PO Box 1457  
Pittsboro, North Carolina 27312  
Voice: (919) 545-2004  
Fax: (919) 545-9002



NEW PROJECT FOR  
**VET TECH BUILDING**  
CENTRAL CAROLINA COMMUNITY COLLEGE  
1105 KELLY DRIVE  
SANFORD, NC 27330

SCO ID  
#14-11296-02A  
NCCCS #2067

No.	Date

EXTERIOR BUILDING ELEVATIONS

DATE  
10-21-2016

**A-302**